

# REPLACEMENT CIVIC CENTRE

## CONCEPT 1 - EVENT SPACE ATRIUM

### CONCEPT

A three-storey internal atrium operates as the main public space for the facility, bisecting the building into administrative and public wings.

A wooden ribbon in the form of stairs and guard rails directs public passage both horizontally and vertically with an uninterrupted connection to the Council Chambers.

The Council Chambers, a wood encased room, is the metaphorical heart of the building and is designed as an object within a display frame, suspended above the ground plane on the second floor.

As an object seen from the outside, the Council Chambers serves as a wayfinding landmark while approaching the building from the road and from the pedestrian entrances.

### FIRST FLOOR PROGRAM

Customer Service HUB;  
Combined Clerk and Law Enforcement Service Desk;  
Staff Facilities;  
Support Areas

### SECOND FLOOR PROGRAM

Council Chambers;  
Mayor's Office and Council Area;  
CAO;  
Human Resources;  
IT Services;  
Recreation and Culture

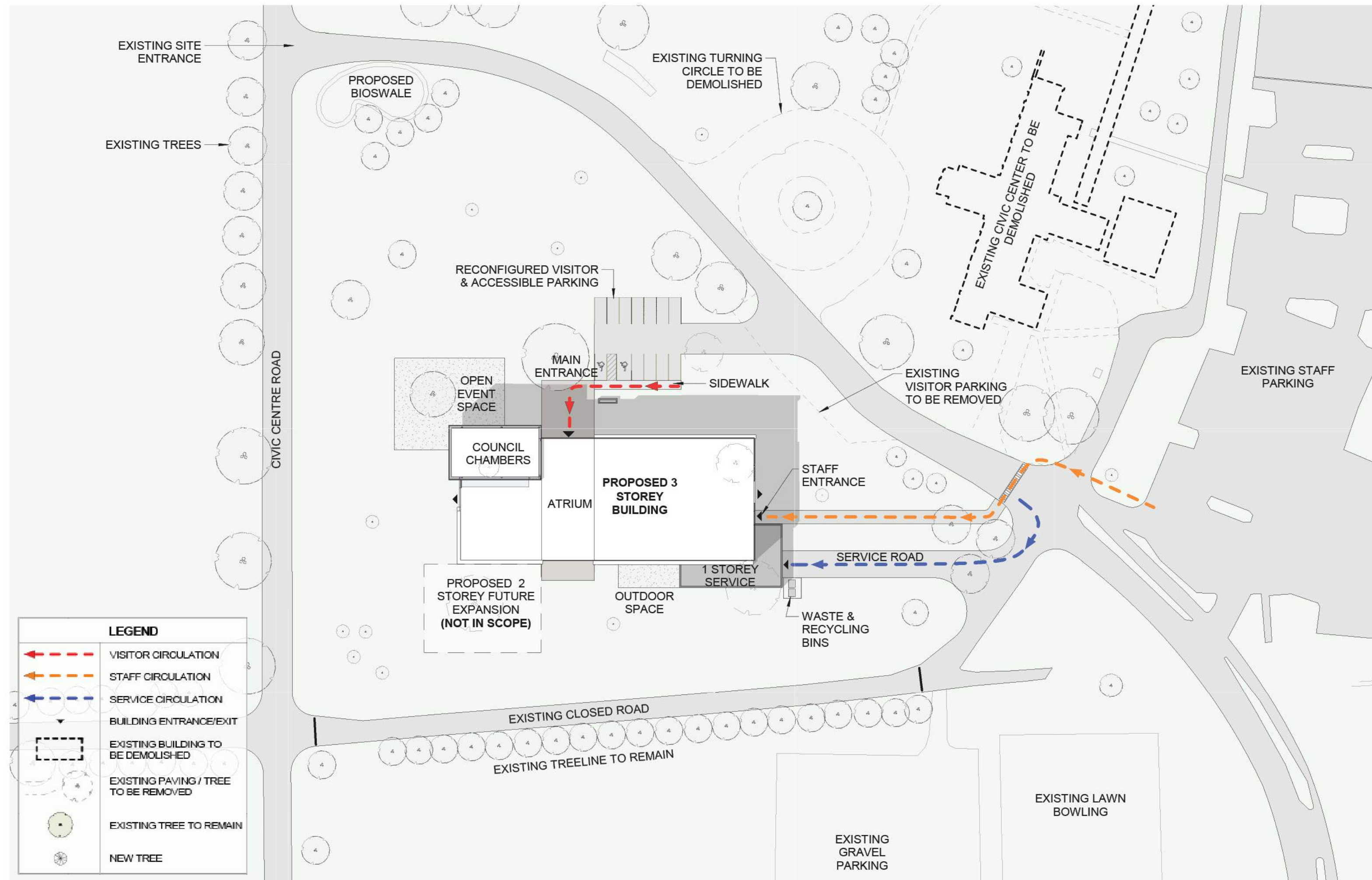
### THIRD FLOOR PROGRAM

Development Services: Planning,  
Development Engineering,  
Building,  
Economic Development and Tourism;  
Operations

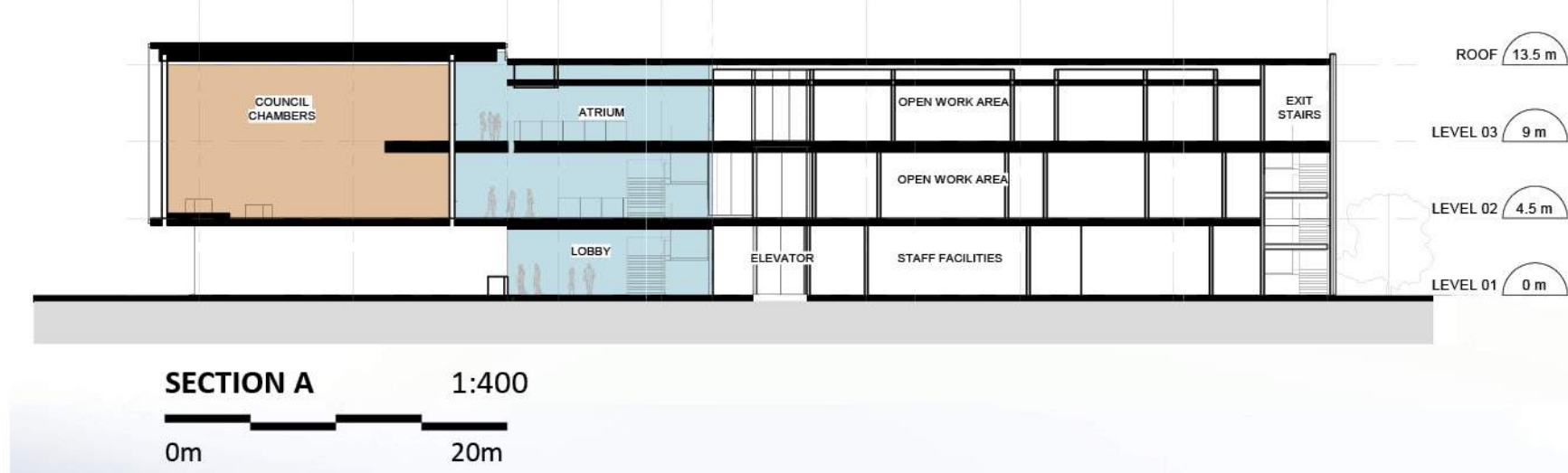
*\*Second and third floor program could be flipped for greater ease of public access to Development Services*



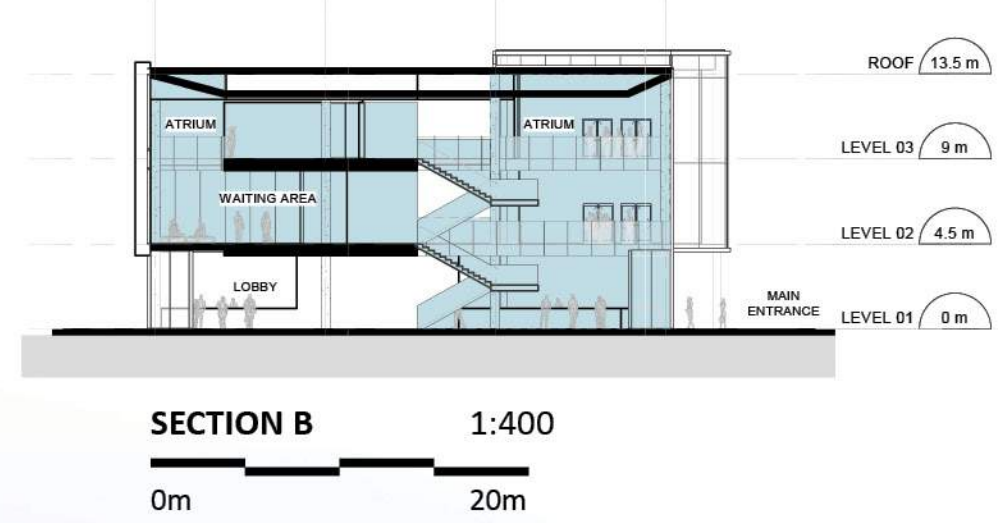
SECTION AT ATRIUM



SITE PLAN 1:750



SECTION A 1:400



SECTION B 1:400



ELEVATION NORTH 1:400



ELEVATION WEST 1:400



MAIN ENTRY



# REPLACEMENT CIVIC CENTRE

## CONCEPT 2 - COMMUNITY COURTYARD

### CONCEPT

The two-storey administrative and public structure has been designed around an open-air courtyard that serves as an organizing element, promoting a sense of transparency and community.

The courtyard will provide a meeting and gathering place in good weather and a visual foil during bad weather.

The massing of the building has been kept to two stories to relate modestly with the surrounding horizon line; The flying roofline tapers gently from the structure, terminating in an elegant and uplifting wing over the Council Chambers.

The courtyard functions as a visual and physical extension of the interior public and administrative spaces.

The courtyard also provides a contemplative outdoor area for Town staff.

Council Chambers are located prominently on the corner of the building, visible from both Civic Centre Road and from the internal site.

### FIRST FLOOR PROGRAM

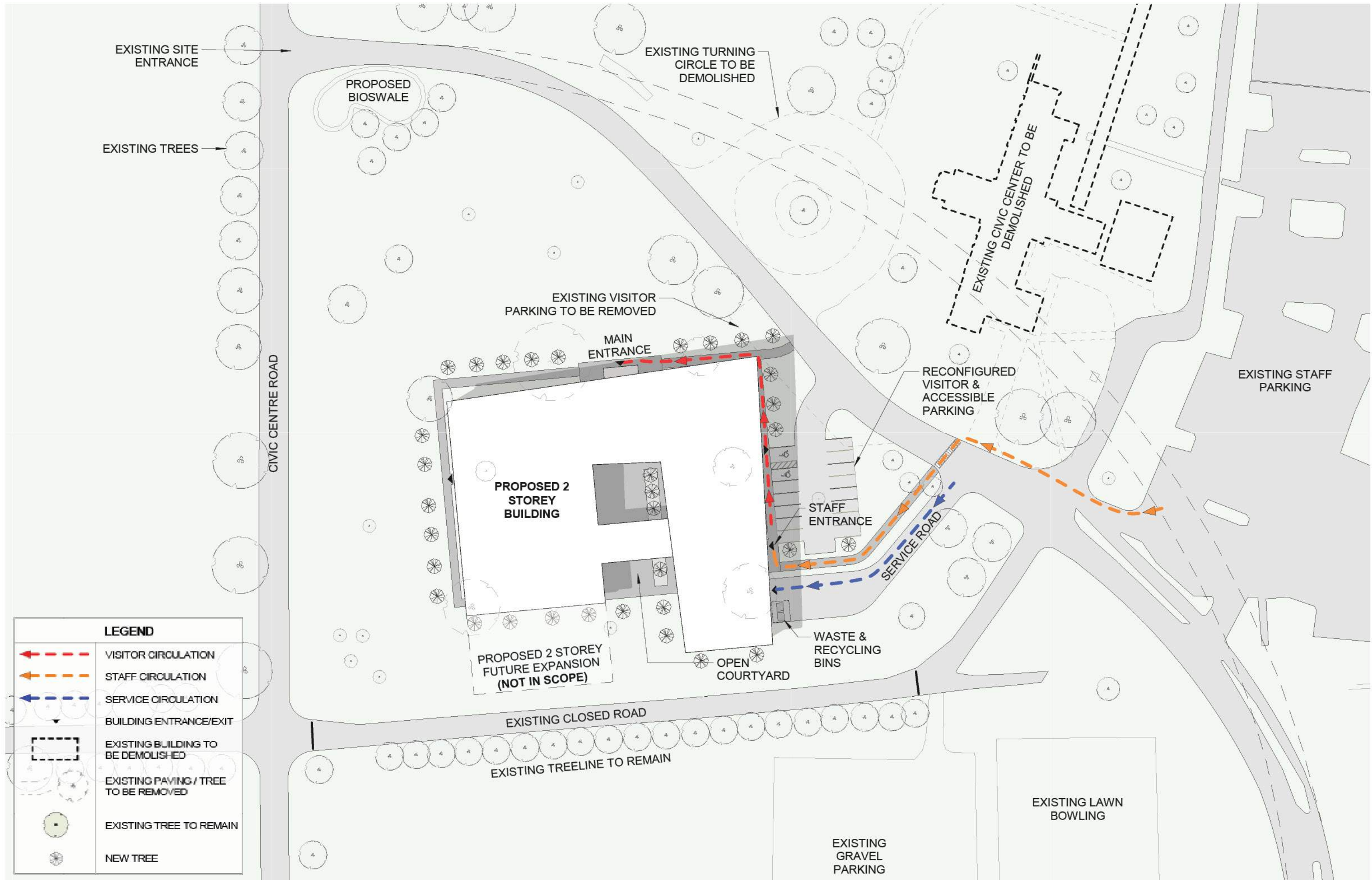
- Customer Service HUB;
- Council Chambers
- Combined Clerk and Law Enforcement Service Desk;
- IT Services;
- Staff Facilities;
- Support Areas

### SECOND FLOOR PROGRAM

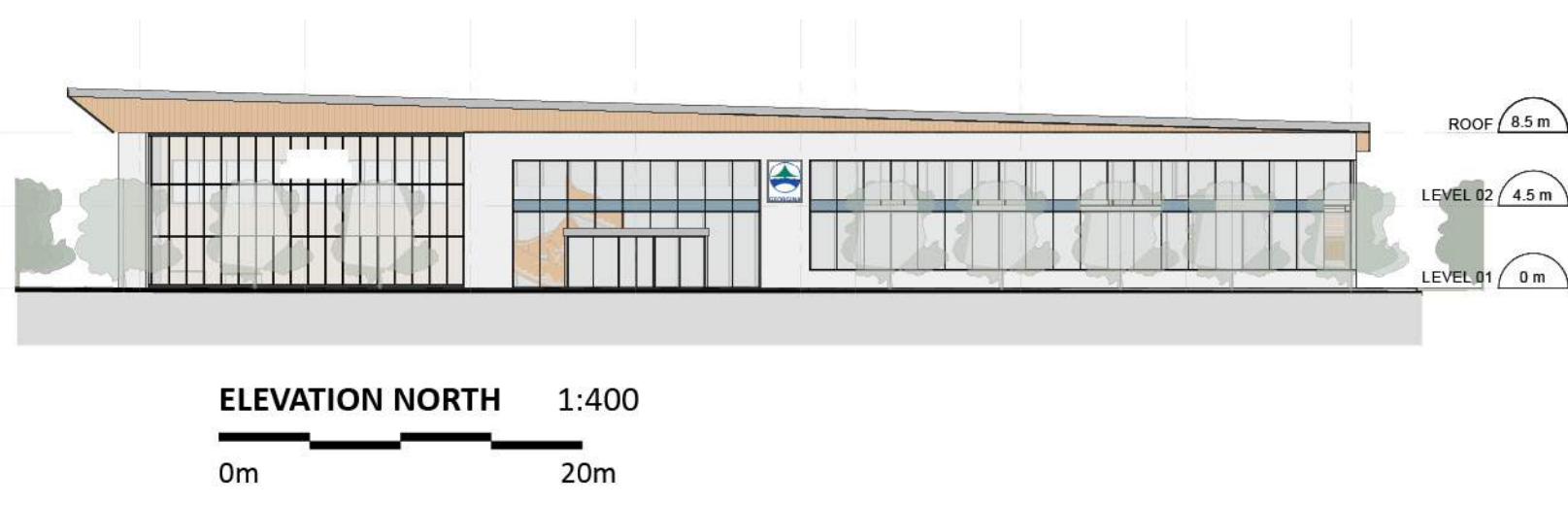
- Mayor's Office and Council Area;
- CAO;
- Human Resources;
- Recreation and Culture;
- Development Services: Planning, Development Engineering, Building,
- Economic Development and Tourism;
- Operations



COURTYARD



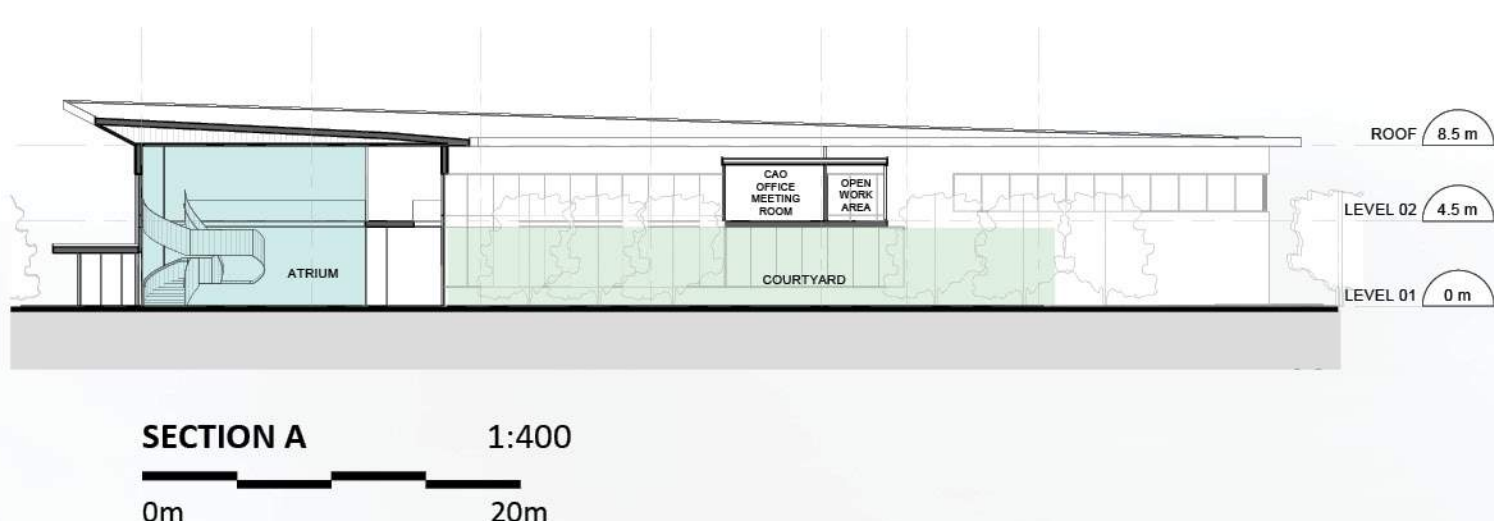
SITE PLAN 1:750



ELEVATION NORTH 1:400



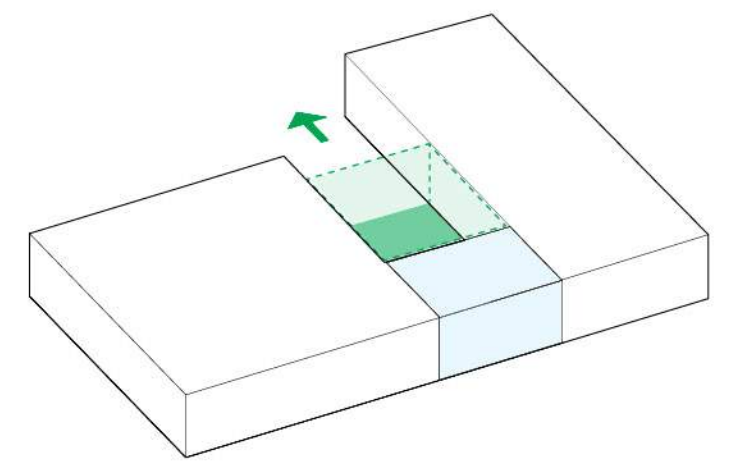
ELEVATION WEST 1:400



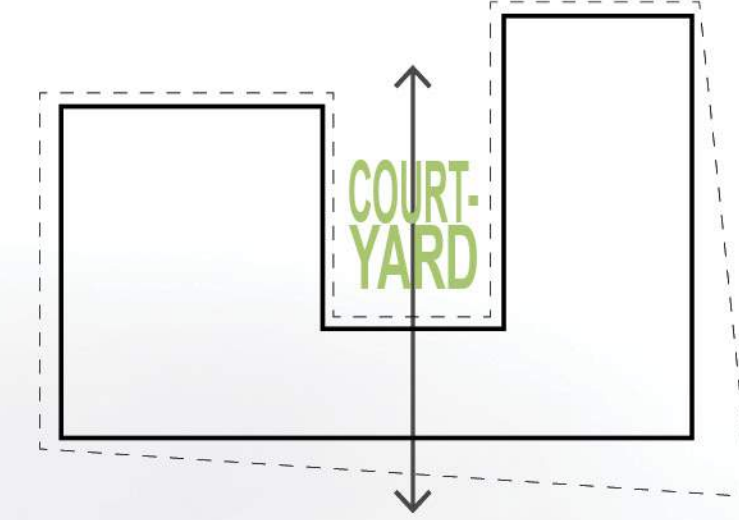
SECTION A 1:400



SECTION B 1:400



CONCEPT



PART I



MAIN ENTRY







# REPLACEMENT CIVIC CENTRE

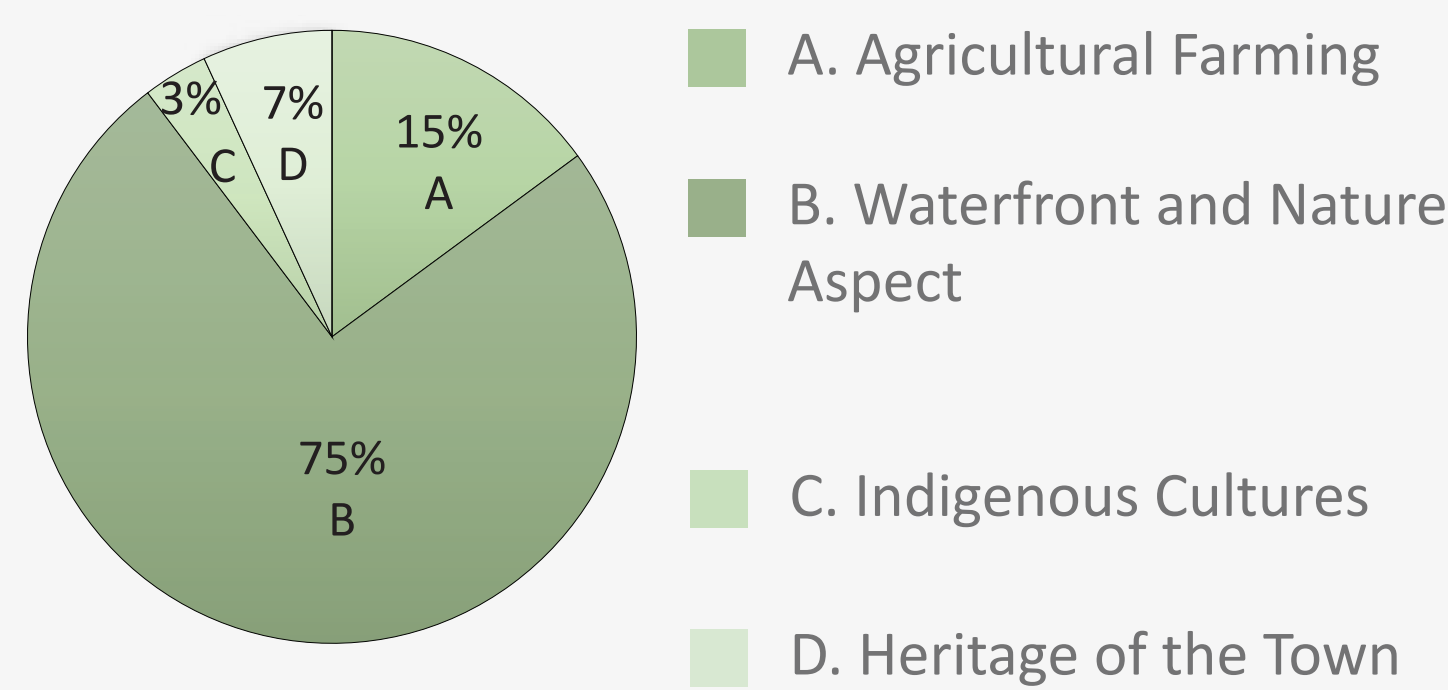
## PUBLIC INPUT SESSION FEEDBACK

### COMMUNITY RESPONSE DATA

PUBLIC INPUT SESSION 01	ONLINE SURVEY	HARDCOPY SURVEY
May 28, 2019	61 Participants	42 Participants
40 Participants		

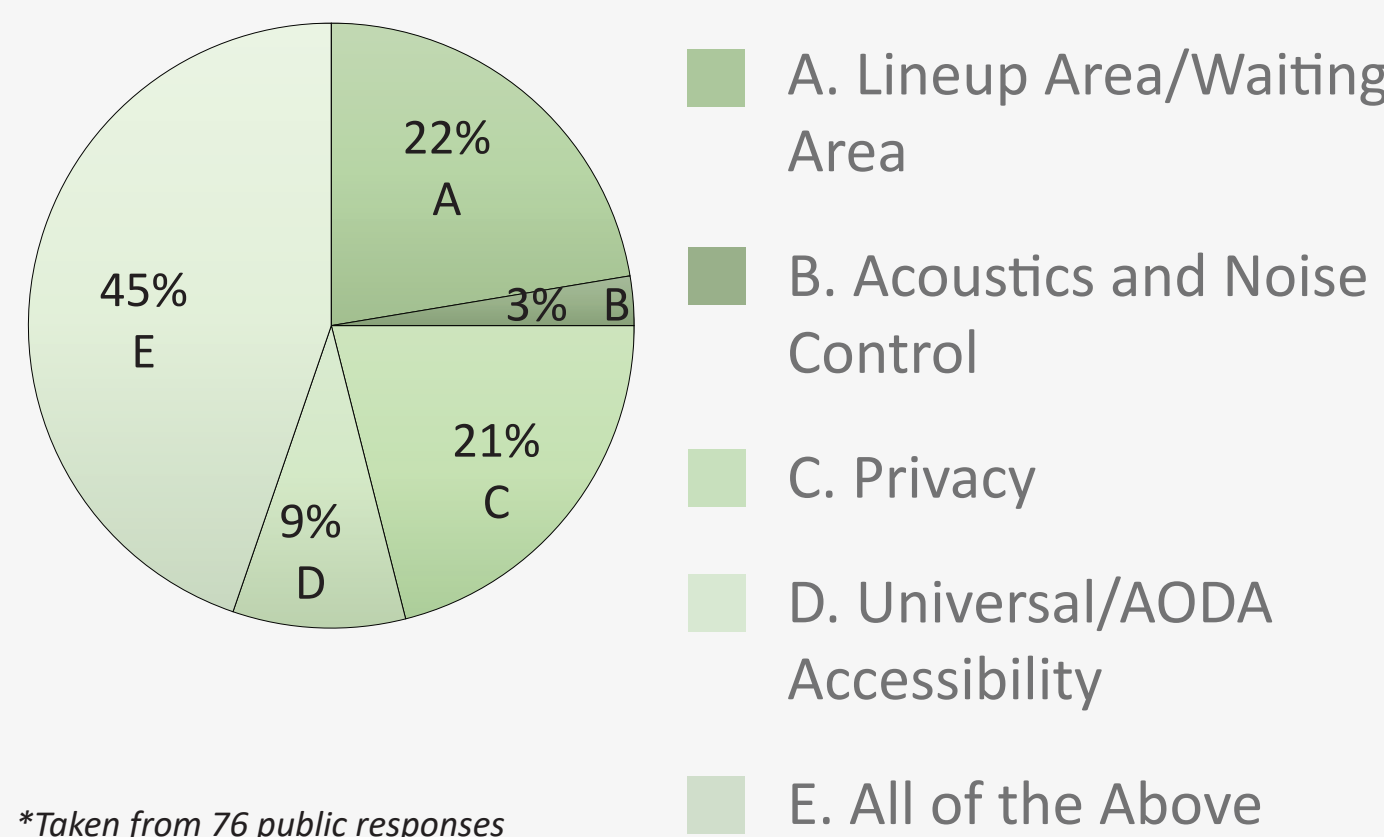
### WHAT WE HEARD FROM THE COMMUNITY

What characteristics make the Town of Georgina unique?



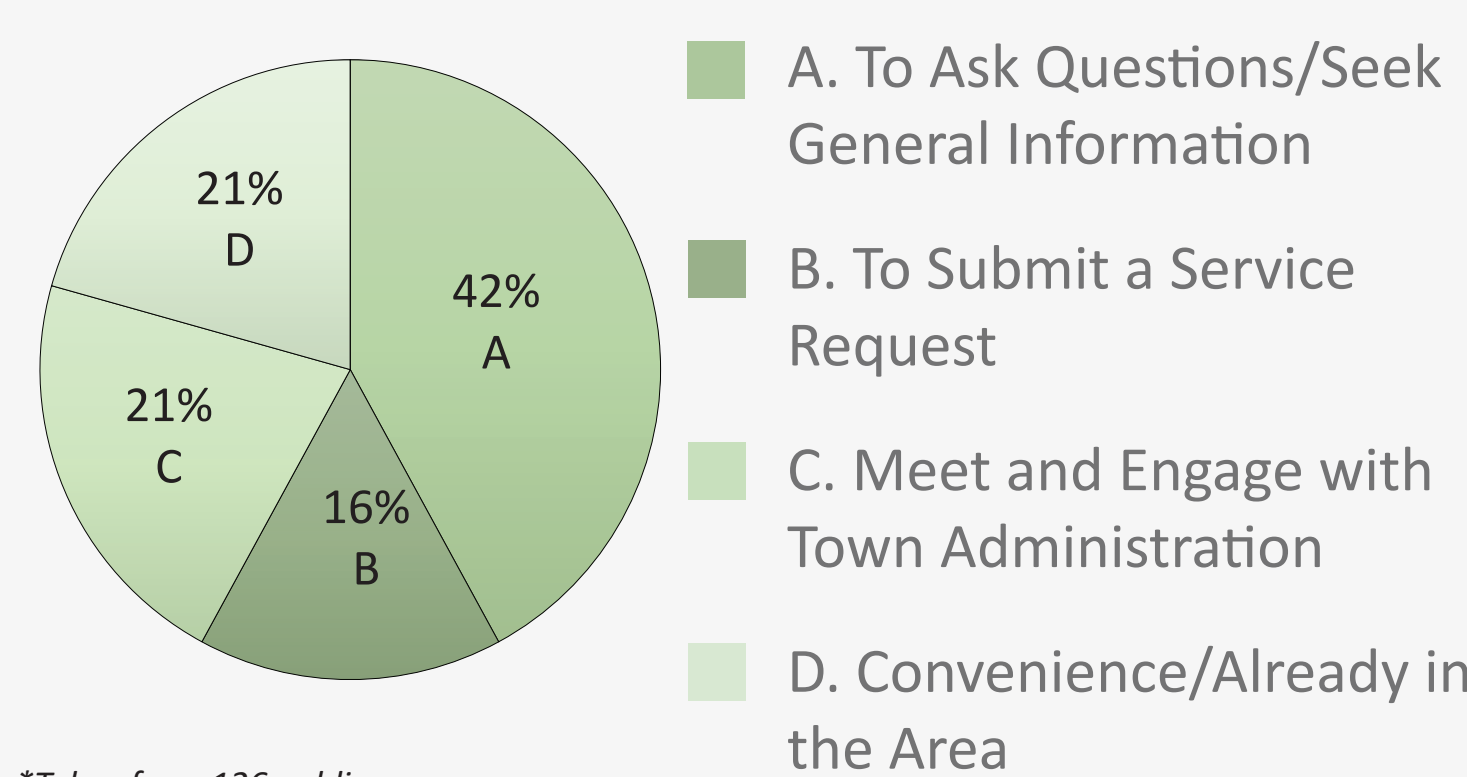
\*Please Note: The above is a grouping of 87 specific public responses, categorized into broader themes.

What aspects of the existing customer service counter do you find requires improvements?



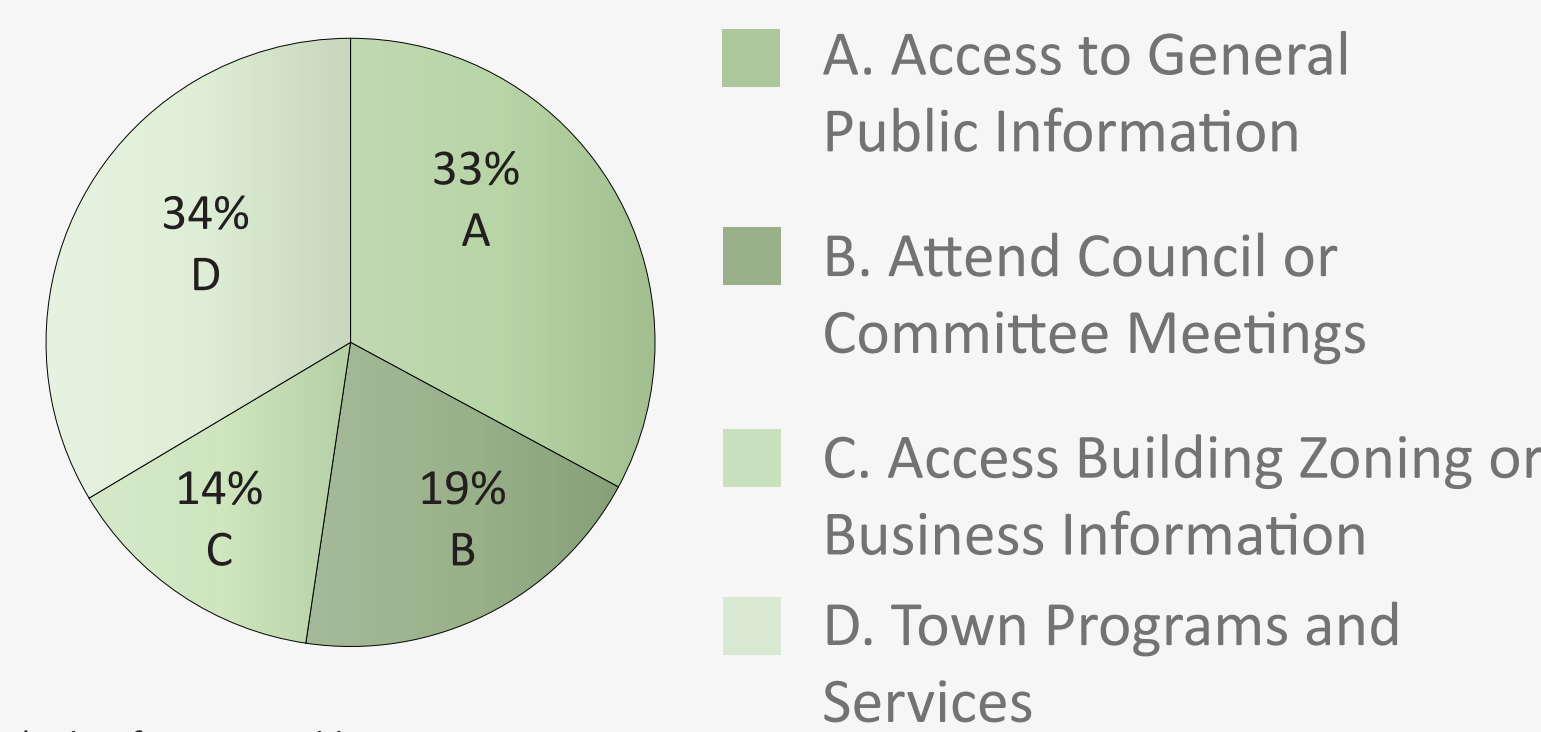
\*Taken from 76 public responses

Why do you access public services in person at the Civic Centre?



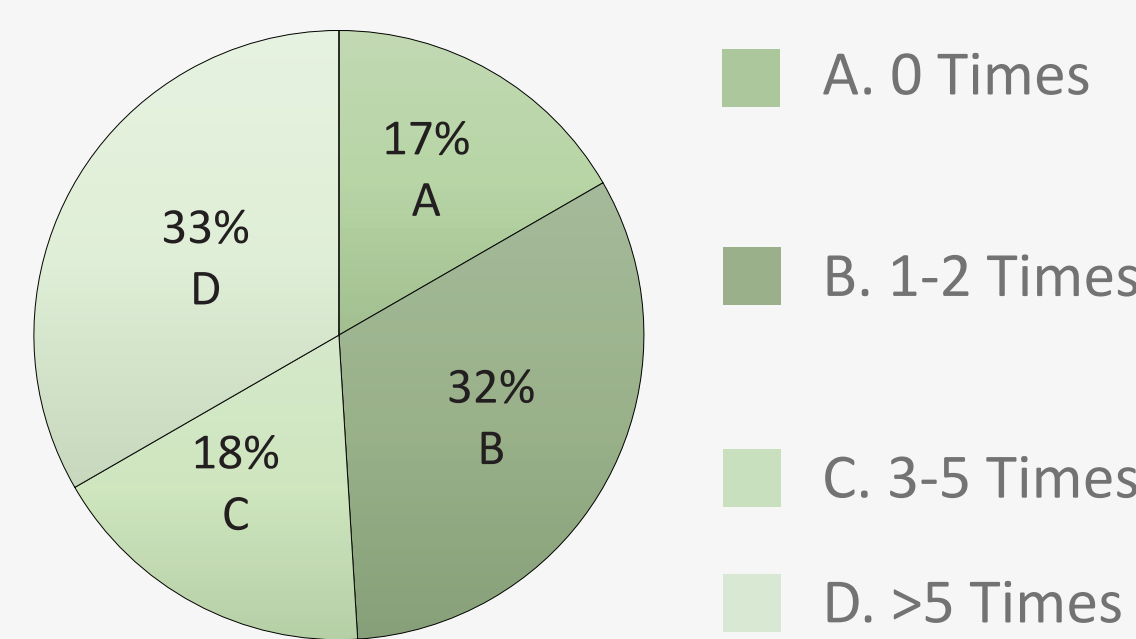
\*Taken from 126 public responses

What information services do you access at the Civic Centre?



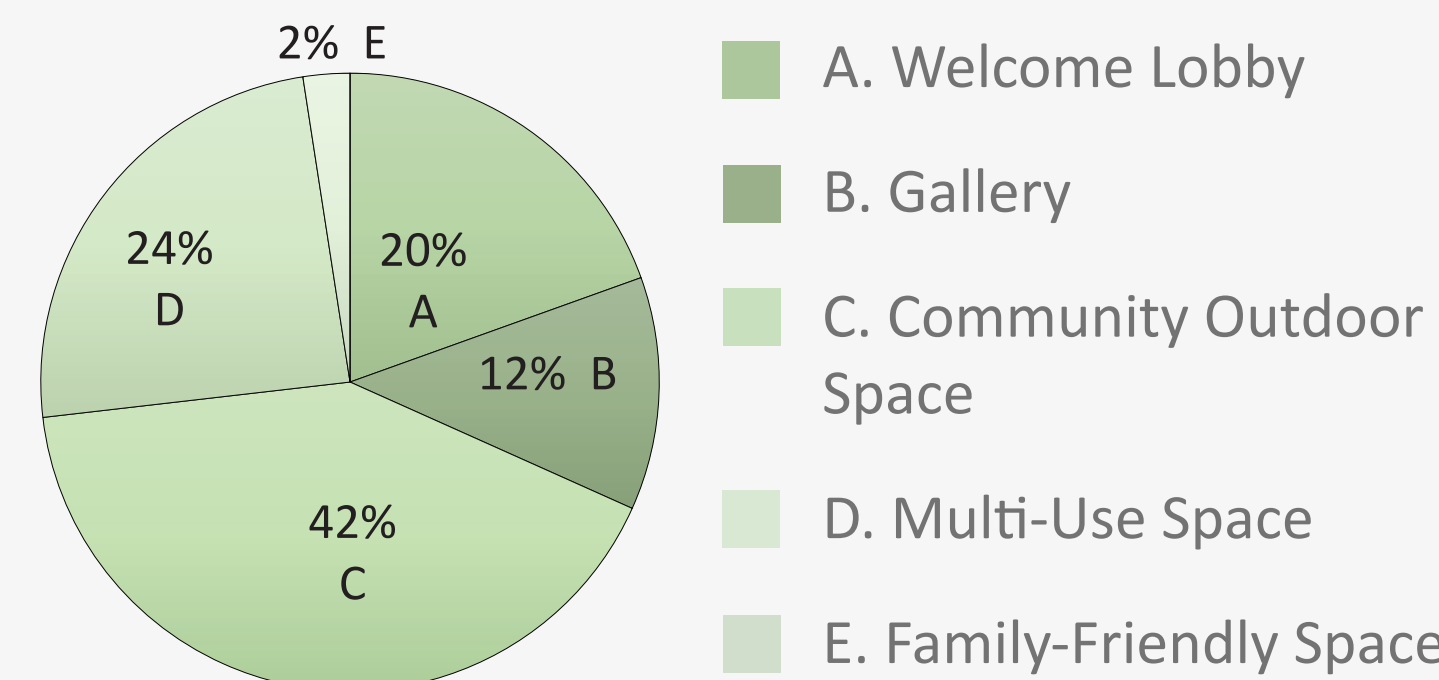
\*Taken from 143 public responses

How often do you visit the existing Civic Centre annually?



\*Taken from 102 public responses

What is one unique feature that would make you want to visit the Replacement Civic Centre on a regular basis?



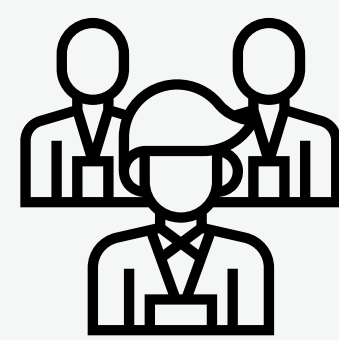
\*Please Note: The above is a grouping of 41 specific public responses, categorized into broader themes.

### COMMON THEMES THAT HAVE EMERGED



#### COMMUNITY

WELCOME LOBBY  
COMMUNITY OUTDOOR SPACE  
GALLERY  
PUBLIC SPACE  
FAMILY FRIENDLY SPACES  
DIGITAL SELF KIOSKS ONLINE SERVICES  
MULTI-USE SPACES  
NATURE  
QUICK AND EASY BUILDING ACESSS  
COURTYARD  
HISTORICAL CONTENT  
ACCESSIBLE  
ENHANCED COUNCIL CHAMBERS



#### STAFF

INVITING ENTRY  
ACCESS TO OUTDOOR SPACE  
UNIQUE LANDSCAPE  
PUBLIC INDOOR SPACE  
QUALITY WORK SPACE  
ENHANCED CUSTOMER SERVICES  
MIX OF URBAN AND RURAL  
SUSTAINABILITY  
ATRIUM  
ACCESSIBLE  
CIVIC SYMBOL  
ADDITIONAL MEETING ROOMS  
ENHANCED COUNCIL CHAMBERS

### NEXT STEPS

