

Waterfront Parks Master Plan

Part 2 (Zones 6-13)

North Gwillimbury Park
Sheppard Park & Wharf
Willow Wharf Park



 The Planning
Partnership

PLAN B Natural Heritage
Baird
TOURISTICS
SCS Consulting Group

Areas of Focus

+ approx. 25 road ends from Sibbald to Roches Point

Sheppard Park & Wharf

Willow Wharf Park

North Gwillimbury Park

JACKSON'S
POINT

Black River

KESWICK

Road Ends

Classification System for Publicly Owned Waterfront Road Ends



Category 1:

Appears to be open to all. Grass is cut, obvious signs of use, sometimes there's a way to get canoes/kayaks in the water. Morning Glory and Port are examples



Category 2:

Currently signed as "no public access", "private", or for members of a residents group or Beach Association only, maintained by Town, Beach Association, residents groups or adjacent residents



Category 3:

A partnership with the Town and the cottage/community association (Roches Point seems to be the only example)



Category 4:

Currently, inaccessible by foot (ie no clearing for trail or ATV)

North Gwillimbury Park

Context



North Gwillimbury Park

Study Area



North Gwillimbury Park

Land Ownership



North Gwillimbury Park

Facilities & Amenities



North Gwillimbury Park



North Gwillimbury Park

Natural Heritage



North Gwillimbury Park

Natural Heritage Overview

Existing Conditions

- Manicured park grounds with planted eastern white cedar, Scots pine, white pine, red/silver maple, sugar maple, willow, white birch, poplar, and Manitoba maple. Trees range from 10 to 60 + cm in diameter.
- Patchy shoreline vegetation with armour stone and beach stone protection. Dominant species include willow, Manitoba maple, red-osier dogwood, honeysuckle, brambles, aster/goldenrod, and perennial forage grasses.
- Stormwater management facility (constructed wetland) in northeast corner.
- Paradise Beach-Island Grove Provincially Significant Wetland Complex to the south of Metro Road.

Coastal

Existing Conditions

- Shoreline exposed to Lake Simcoe
- Shoreline protected with boulders, trees, shrubs
- Evidence of erosion behind boulder protection due to overtopping, ice
- Cobbles in nearshore lakebed

North Gwillimbury Park

LSRCA Lake Shoreline Hazard/Regulation Area



North Gwillimbury Park

What We've Heard So Far

- not an ideal location for swimming, deep and a lot of current
- well used for events
- could possibly include a leash free dog area
- needs trees planted
- adjacent to a 290 acre environmental area
- most people drive, so parking can be a problem. Lake access here is limited.
- a lot of potential, possibly for recreational fields or additional recreation facilities would to allow for more consistent use
- well used in the winter, although the slope down to the lake can be difficult for snow machines
- trail on sound side of Metro Road is snowmobile trail
- needs new picnic pavilion, upgraded washrooms

North Gwillimbury Park

Early Thoughts



Access

- pedestrian walkway on Lake Drive
- realign Lake Drive/treatment of Lake Drive
- signage and wayfinding

Landscape & Grading

- integration with storm water management ponds
- enhance landscape
- augment existing shoreline vegetation with locally indigenous plant species
- a 1-2 m wide “no mow” zone along the shoreline that can re-establish and be augmented with native plantings.
- consider installing an osprey platform

Recreation & Park Amenities

- expand recreation facilities e.g. sports fields, disc golf, beach volleyball
- new pavilion and upgraded washrooms

Sheppard Park & Wharf

Context



Sheppard Park & Wharf

Study Area



Sheppard Park & Wharf

Land Ownership

Legend

- Town of Georgina Property
- Town of Georgina Rights-of-Way
- York Region Rights-of-Way



Facilities & Amenities



Sheppard Park & Wharf



Sheppard Park & Wharf

LSRCA Lake Shoreline Hazard/Regulation Area



Sheppard Park & Wharf

Early Thoughts



Access

- define pedestrian crossing of Lake Drive
- identify some parking - ?

Landscape & Grading

- removed planting at corner of Sheppard and Lake Drive to open views to water

Recreation & Park Amenities

- improve washrooms; sign washrooms
- accessible surface on playground?

Willow Wharf Park

Context



Willow Wharf Park

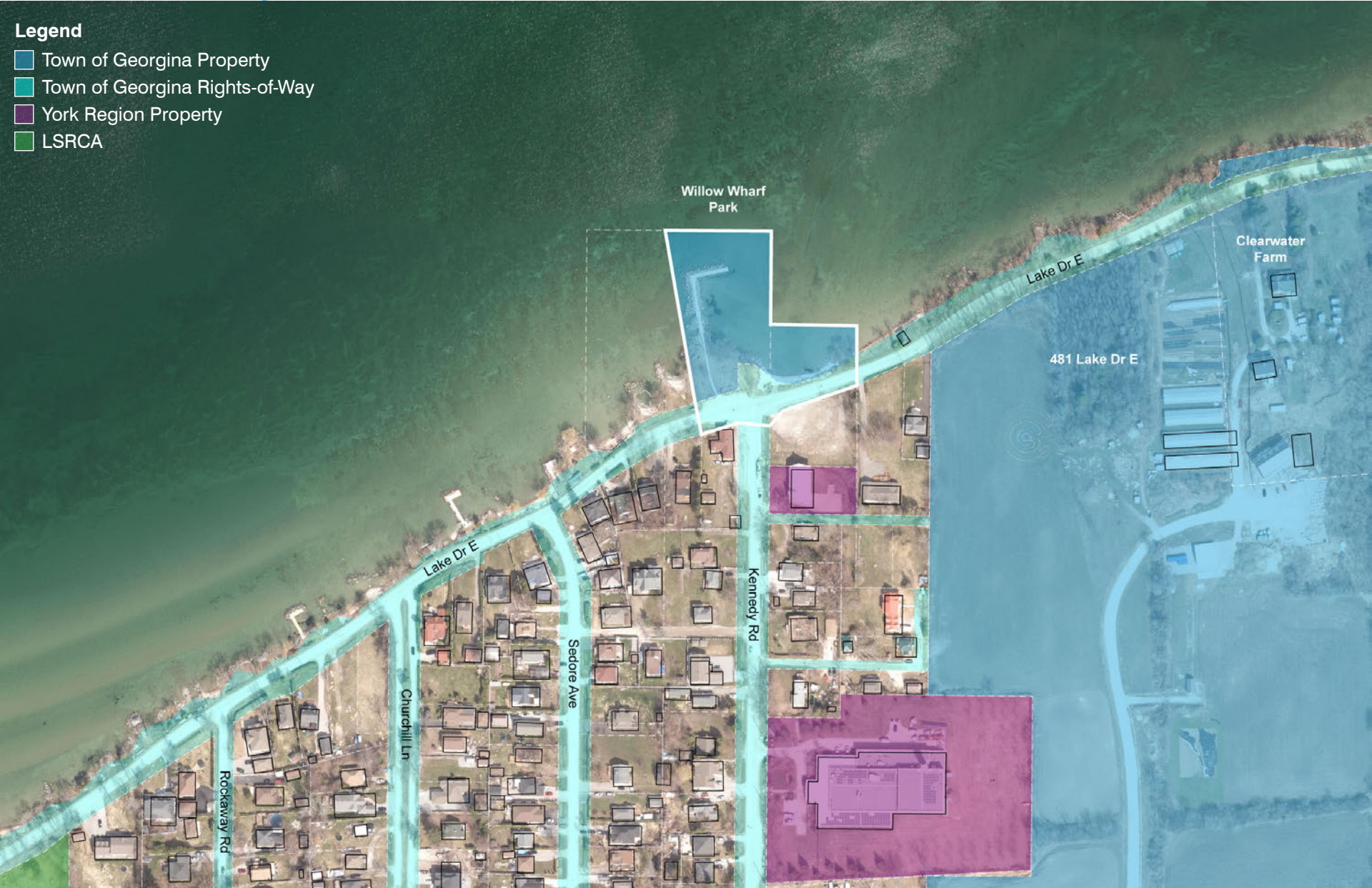
Study Area



Willow Wharf Park

Land Ownership

- Legend**
- Town of Georgina Property
 - Town of Georgina Rights-of-Way
 - York Region Property
 - LSRCA



Willow Wharf Park

Facilities & Amenities



Willow Wharf Park



Willow Wharf Park

LSRCA Lake Shoreline Hazard/Regulation Area

Legend

LSRCA Lake Shoreline Hazard/Regulation Area



Willow Wharf Park

Early Thoughts



Access

- organize and define parking
- safe pedestrian crossing on Lake Drive
- pedestrian walkway on Lake Drive
- add public parking on west end of Clearview Farm

Landscape & Grading

- shoreline restoration/naturalization

Recreation & Park Amenities

- ?