

# Waterfront Parks Master Plan

## Part 2 (Zones 6-13)

Waterfront from Sibbald  
Point to Thorah Park Road  
and Pefferlaw River



 **The Planning  
Partnership**

PLAN B Natural Heritage  
Baird  
TOURISTICS  
SCS Consulting Group



# Park Rd to Thorah Park Blvd & Pefferlaw River

## Area of Focus



# Park Rd to Thorah Park Blvd & Pepperlaw River

## Classification System for Publicly Owned Waterfront Road Ends



### Category 1:

Appears to be open to all. Grass is cut, obvious signs of use, sometimes there's a way to get canoes/kayaks in the water. Morning Glory and Port are examples



### Category 2:

Currently signed as "no public access", "private", or for members of a residents group or Beach Association only, maintained by Town, Beach Association, residents groups or adjacent residents



### Category 3:

A partnership with the Town and the cottage/community association (Roches Point seems to be the only example)



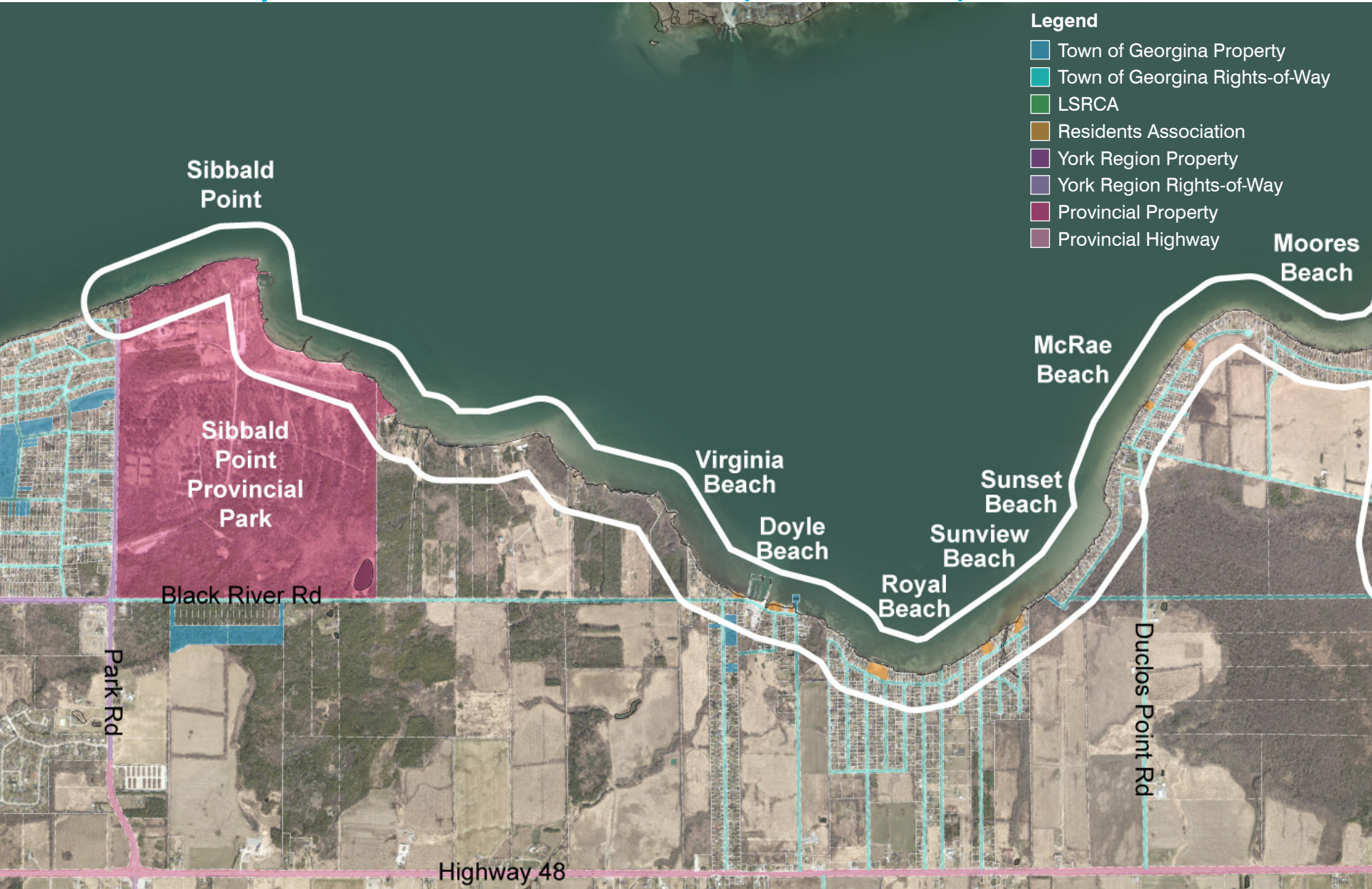
### Category 4:

Currently, inaccessible by foot (ie no clearing for trail or ATV)



# Park Rd to Thorah Park Blvd & Pepperlaw River

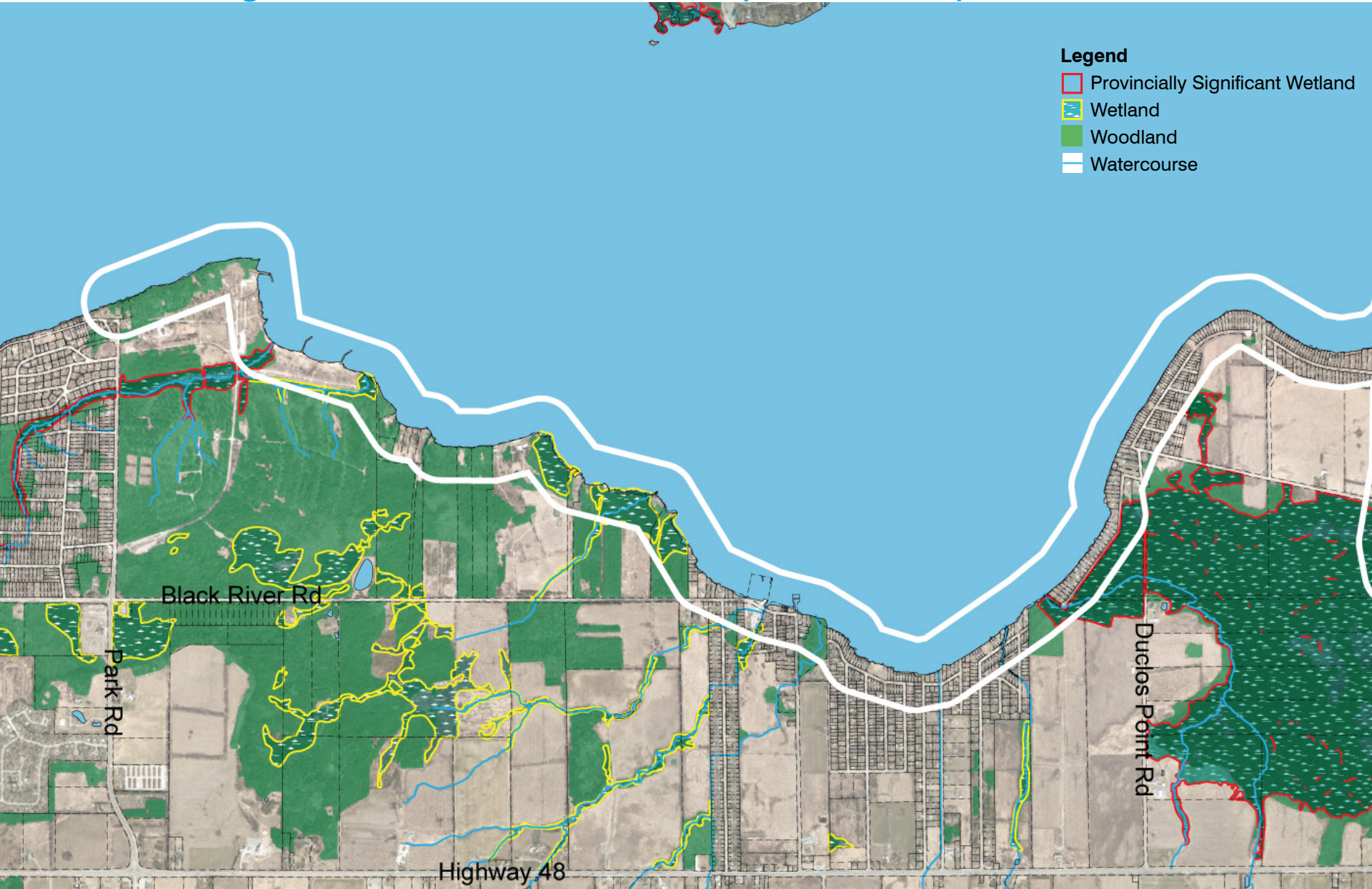
## Land Ownership - Park Rd to Moores Beach (West Portion)





# Park Rd to Thorah Park Blvd & Pefferlaw River

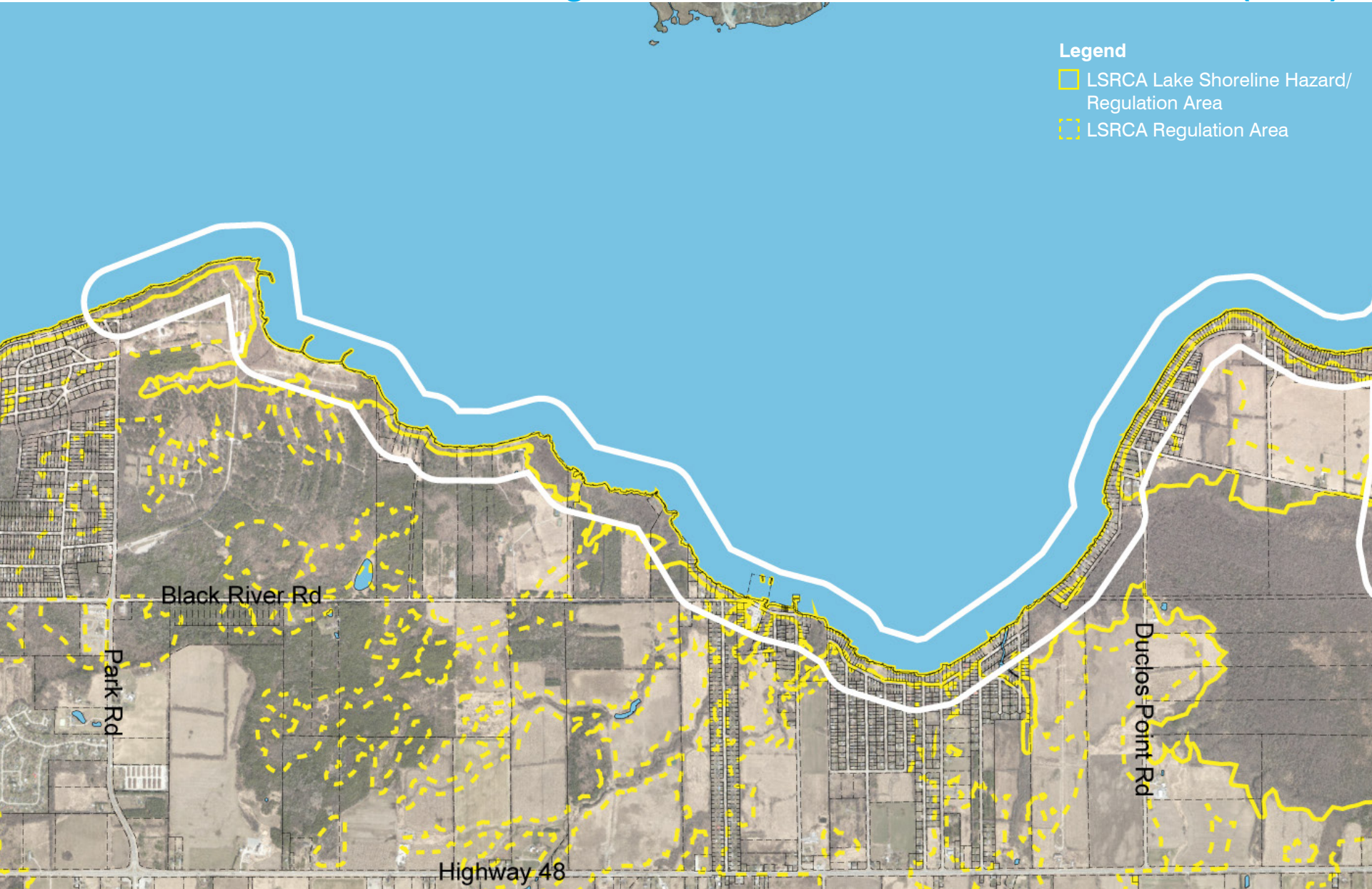
## Natural Heritage - Park Rd to Moores Beach (West Portion)





# Park Rd to Thorah Park Blvd & Pefferlaw River

## LSRCA Lake Shoreline Hazard/Regulation Area - Park Rd to Moores Beach (West)





# Park Rd to Thorah Park Blvd & Pepperlaw River

## Road Ends, Parks and Township Properties (West)

Legend

- Town of Georgina Property
- Town of Georgina Rights-of-Way
- LSRCA
- Residents Association
- York Region Property
- York Region Rights-of-Way
- Provincial Property
- Provincial Highway





# Park Rd to Thorah Park Blvd & Pepperlaw River

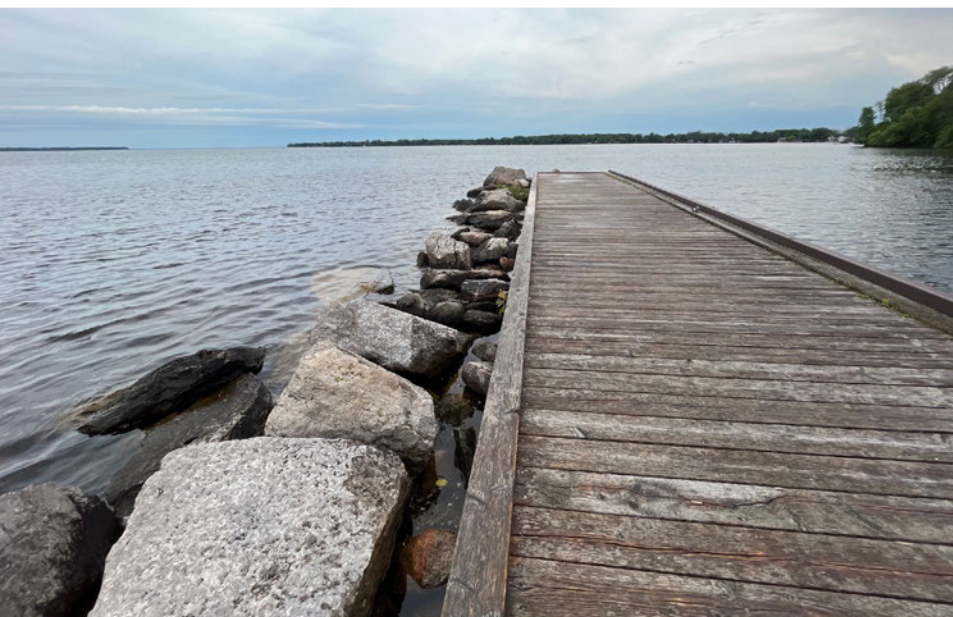
## Virginia Wharf





# Park Rd to Thorah Park Blvd & Pefferlaw River

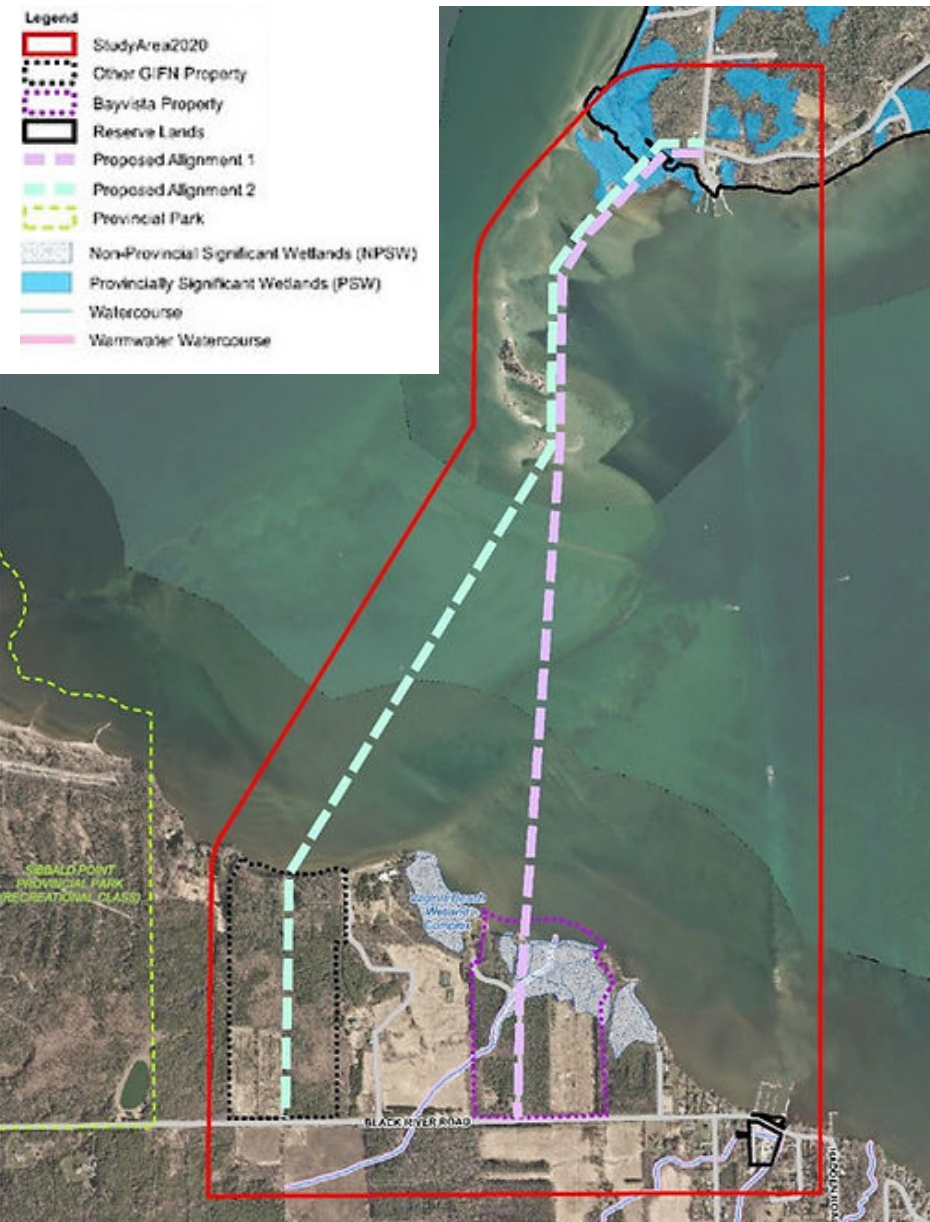
## Virginia Wharf





# Park Rd to Thorah Park Blvd & Pepperlaw River

## Georgina Island Fixed Link Proposal

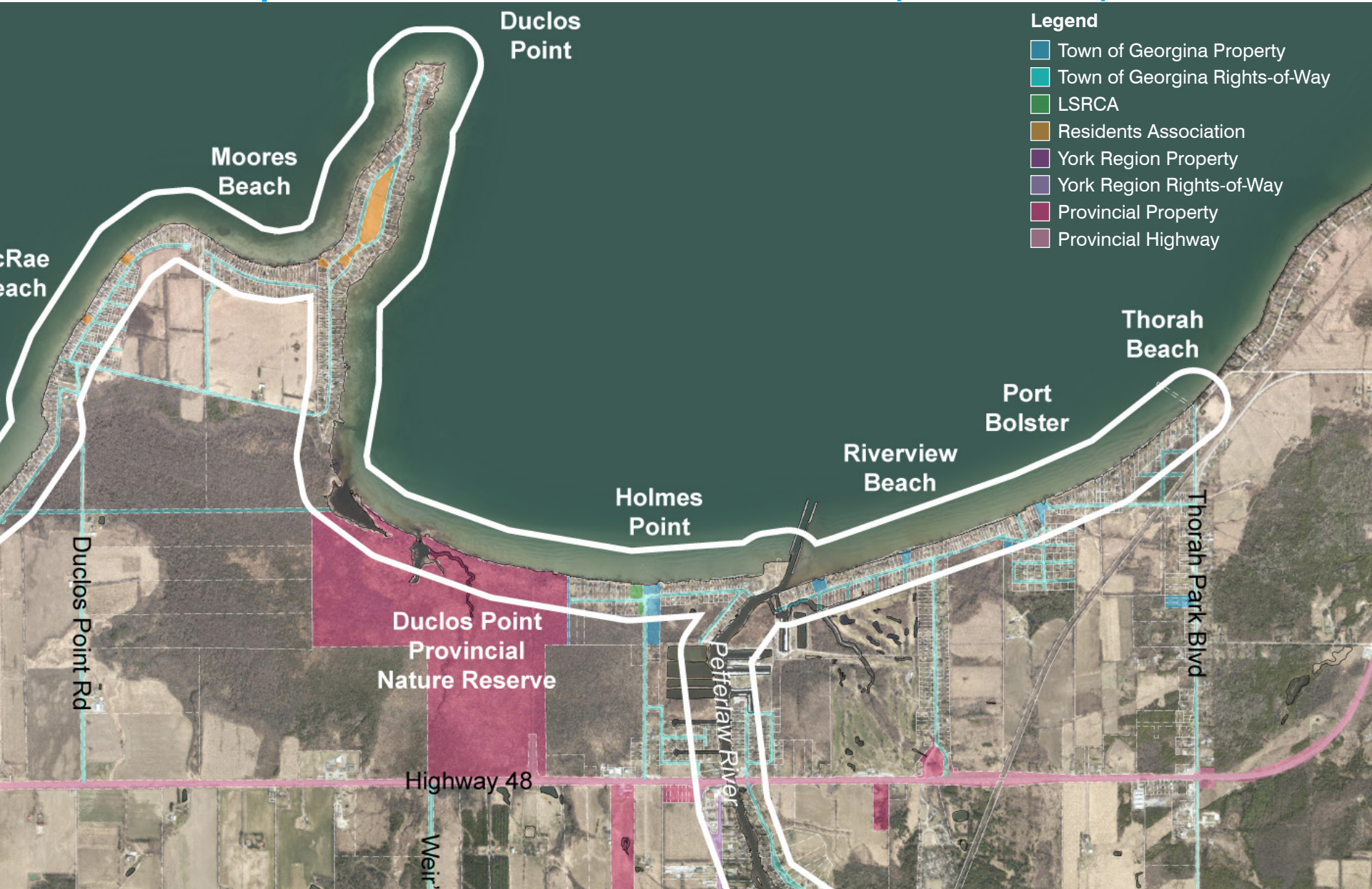


- The Chippewas of Georgina Island First Nation (GIFN) intend to build a Fixed Link that will connect Georgina Island to the mainland.
- The Fixed Link will connect Black River Road to Bear Road and Chief Joseph Snake Road on the Island.
- The Fixed Link will require 3.3 km of roadway including 1 km of roadway and 2.3 km of Fixed Link:
  - 800m causeway to bridge;
  - 700m elevated Bridge; and,
  - 800m causeway to mainland.
- The exact route is still to be determined.
- The Chief and Council of the GIFN passed a resolution on February 17, 2022 affirming their intent to build a Fixed Link connecting Georgina Island to the mainland, to complete the Impact Assessment by the end of 2024, and to have the Fixed Link operational by the end of 2026.



# Park Rd to Thorah Park Blvd & Pefferlaw River

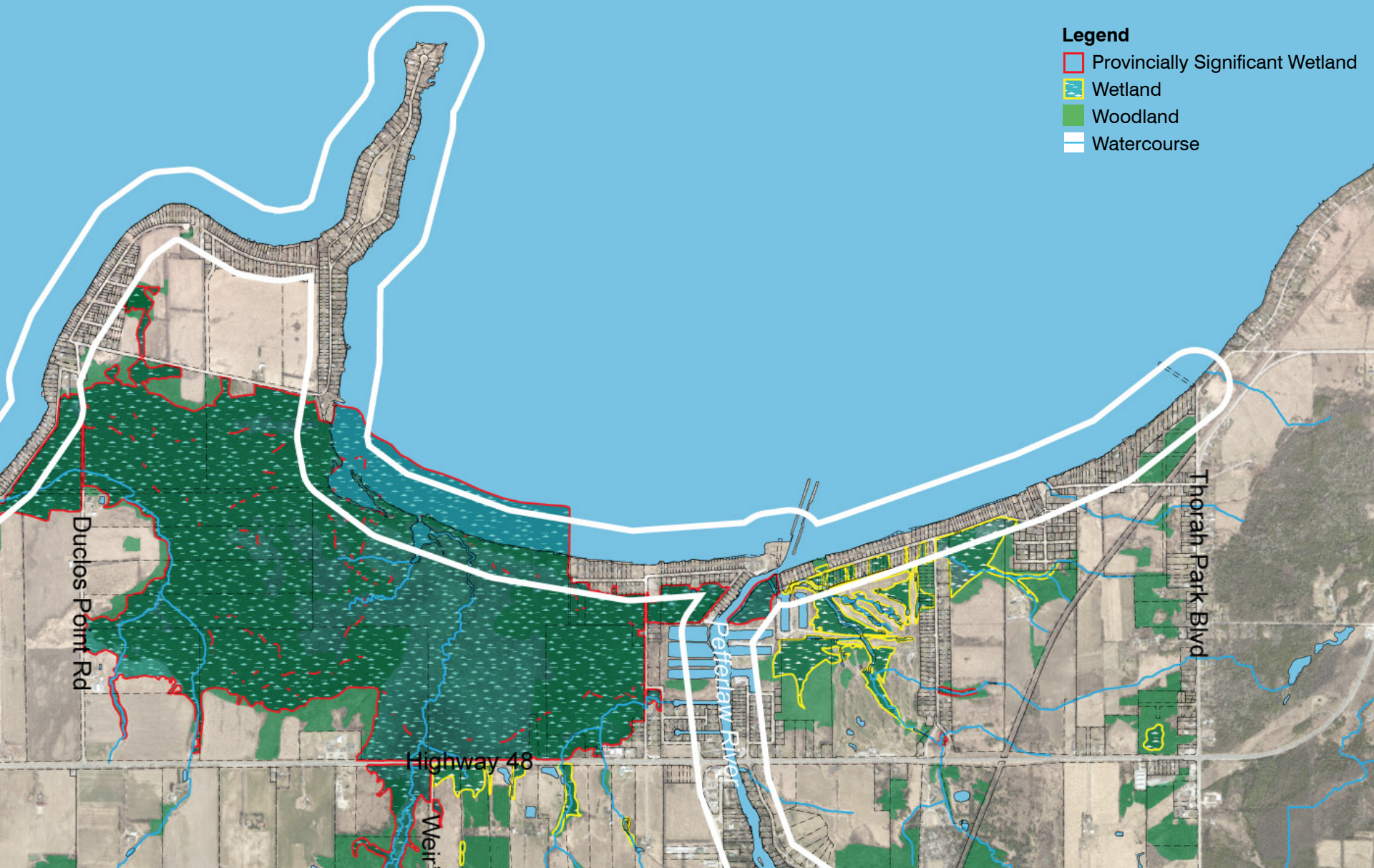
## Land Ownership - Moores Beach to Thorah Park Blvd (East Portion)





# Zone 12 Park Rd to Thorah Park Blvd & Pefferlaw River

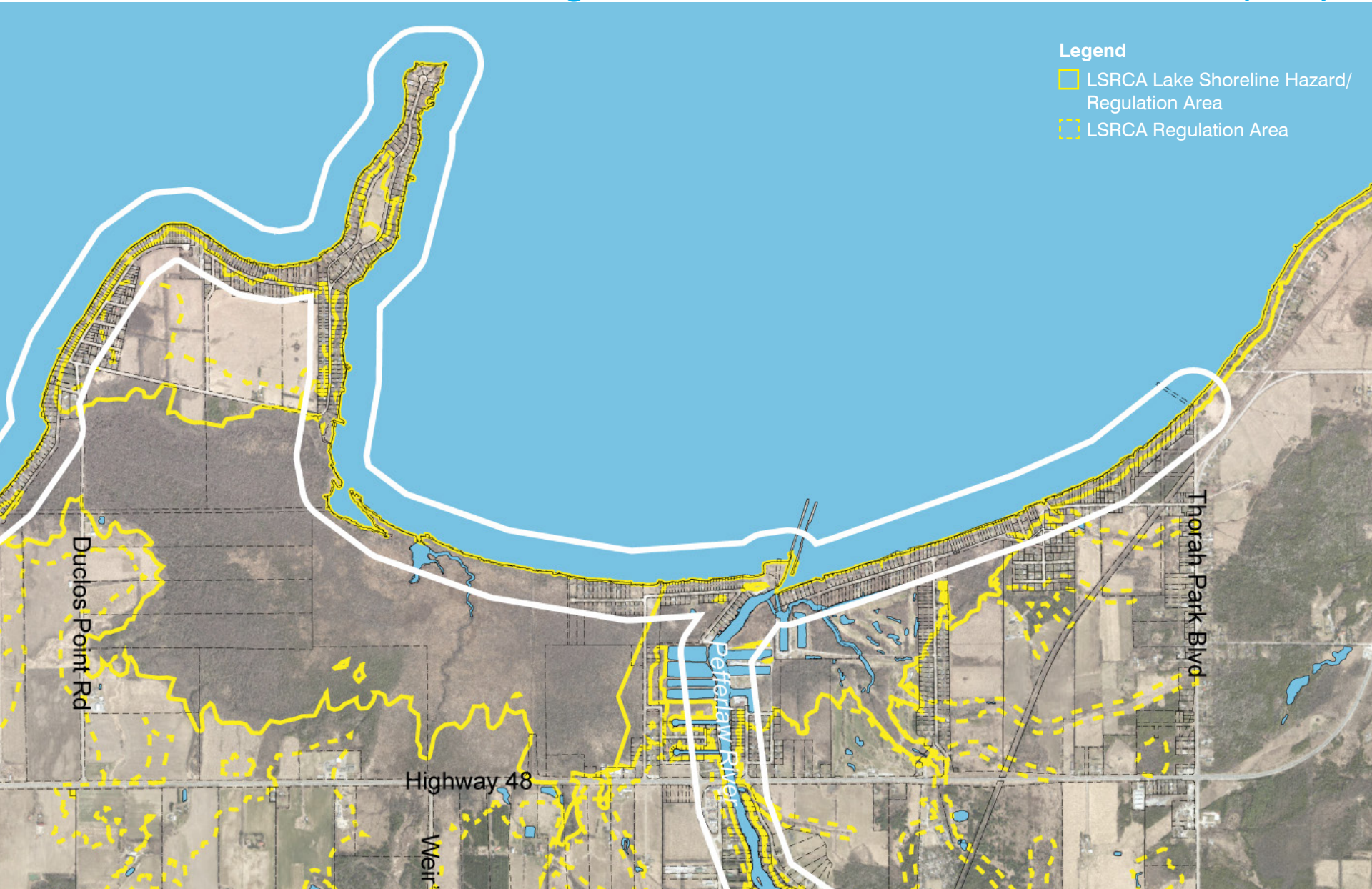
## Natural Heritage - Moores Beach to Thorah Park Blvd (East Portion)





# Park Rd to Thorah Park Blvd & Pepperlaw River

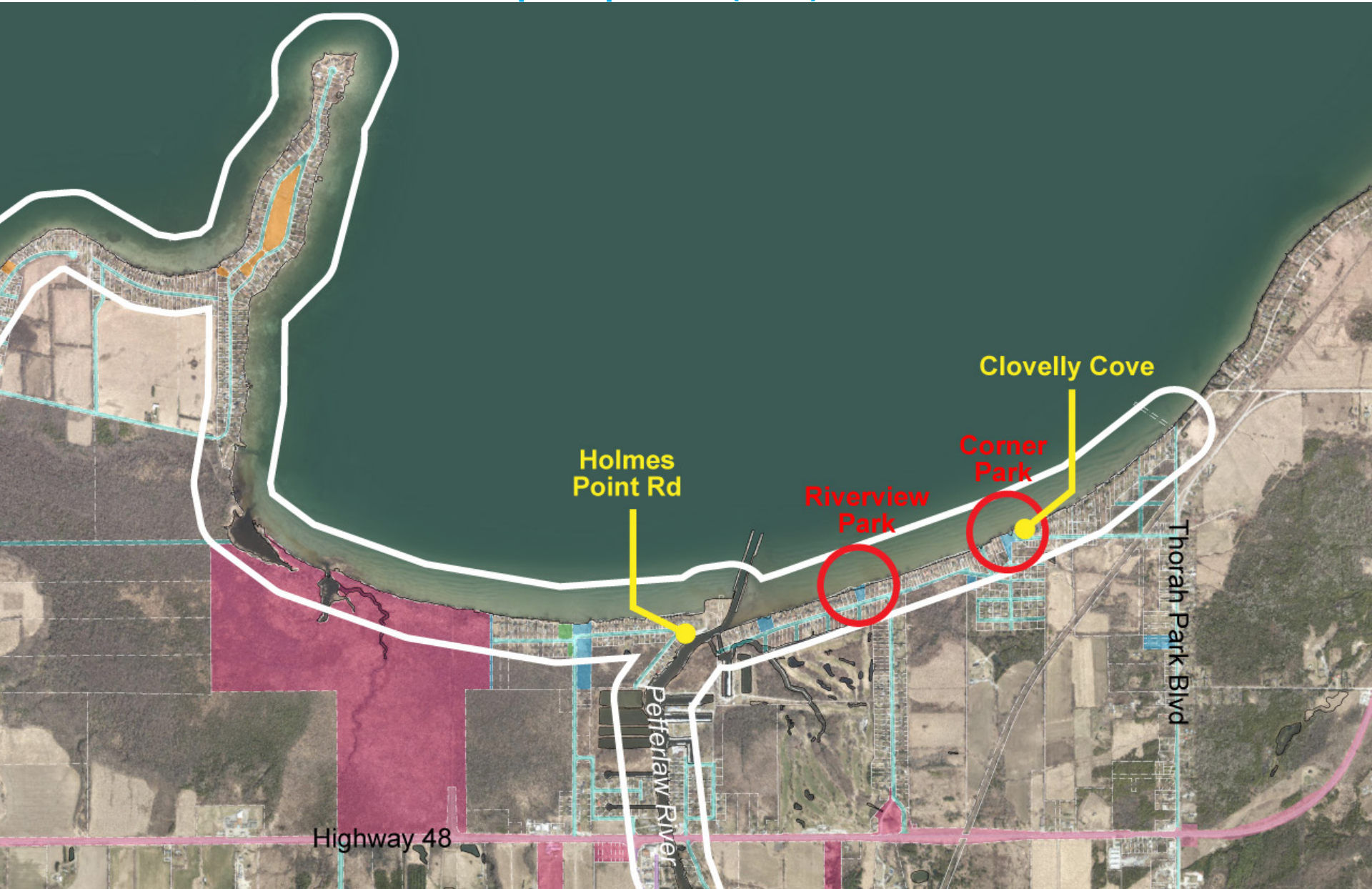
## LSRCA Lake Shoreline Hazard/Regulation Area - Park Rd to Moores Beach (East)





# Park Rd to Thorah Park Blvd & Pefferlaw River

## Road Ends, Parks and Township Properties (East)





# Park Rd to Thorah Park Blvd & Pepperlaw River

## Holmes Point Rd

- Legend
- Town of Georgina Property
  - Town of Georgina Rights-of-Way





# Park Rd to Thorah Park Blvd & Pepperlaw River

## Holmes Point Rd





# Park Rd to Thorah Park Blvd & Pepperlaw River

## Riverview Park

- Legend
- Town of Georgina Property
  - Town of Georgina Rights-of-Way

Riverside Park  
0.28 Ha (0.7 acres)





# Park Rd to Thorah Park Blvd & Pfefferlaw River

## Riverview Park





# Park Rd to Thorah Park Blvd & Pepperlaw River

## Corner Park/Clovelly Cove

- Legend
- Town of Georgina Property
  - Town of Georgina Rights-of-Way

Corner Park  
0.22 Ha (0.55 acres)





# Park Rd to Thorah Park Blvd & Pepperlaw River

## Corner Park





# Park Rd to Thorah Park Blvd & Pfefferlaw River

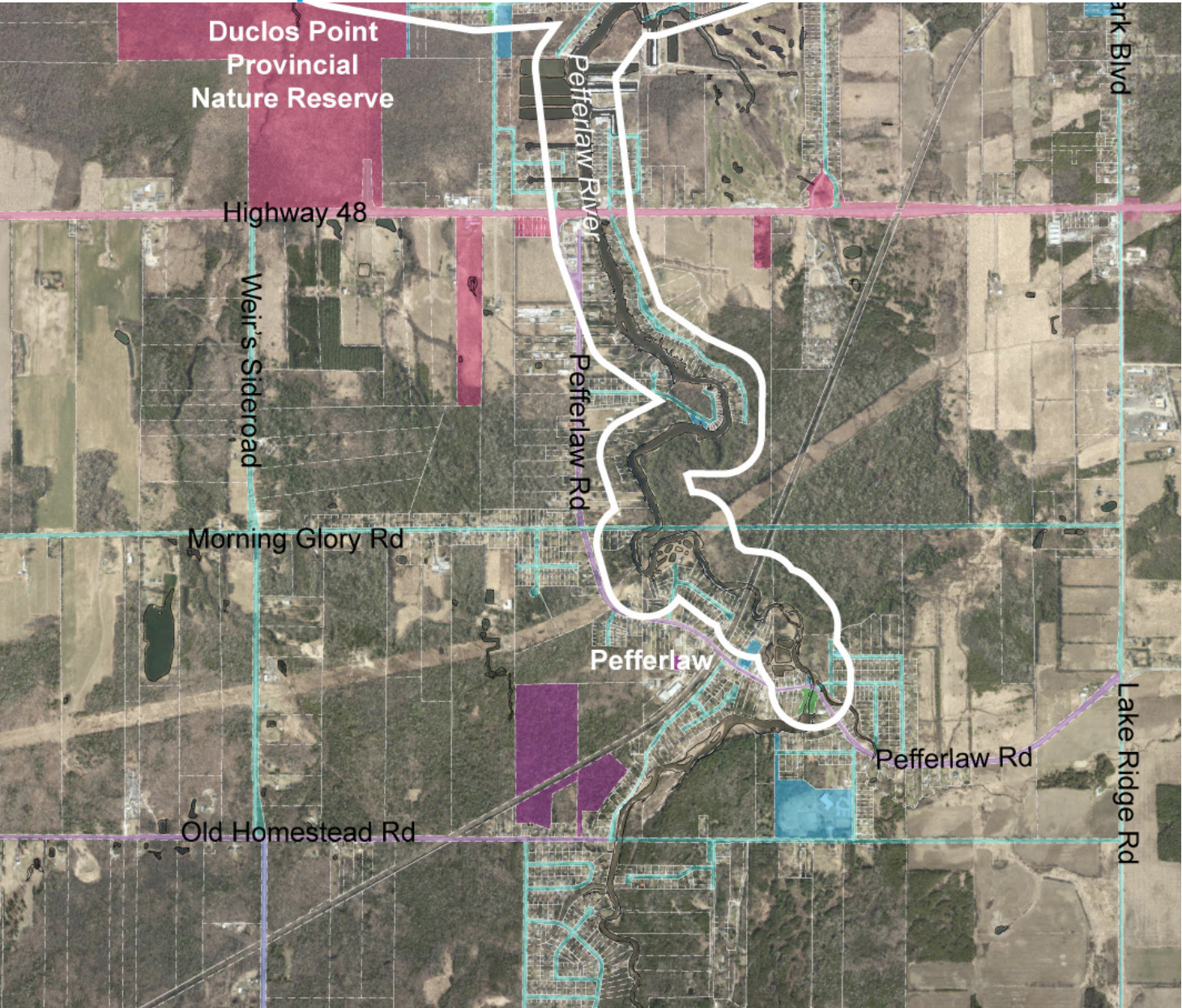
## Clovelly Cove Road End





# Park Rd to Thorah Park Blvd & Pefferlaw River

## Land Ownership - Pefferlaw River



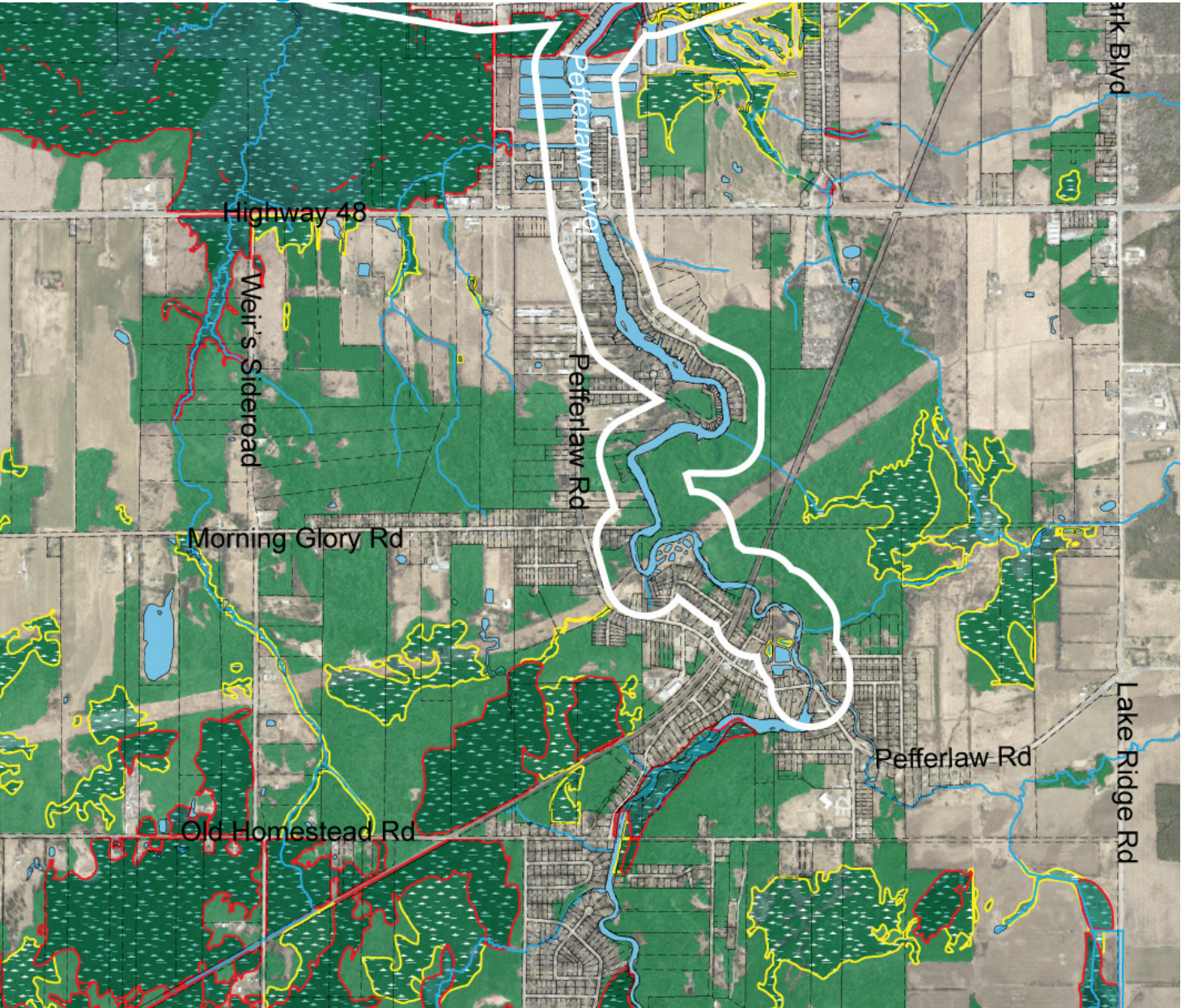
### Legend

- Town of Georgina Property
- Town of Georgina Rights-of-Way
- LSRCA
- Residents Association
- York Region Property
- York Region Rights-of-Way
- Provincial Property
- Provincial Highway



# Park Rd to Thorah Park Blvd & Pefferlaw River

## Natural Heritage - Pefferlaw River

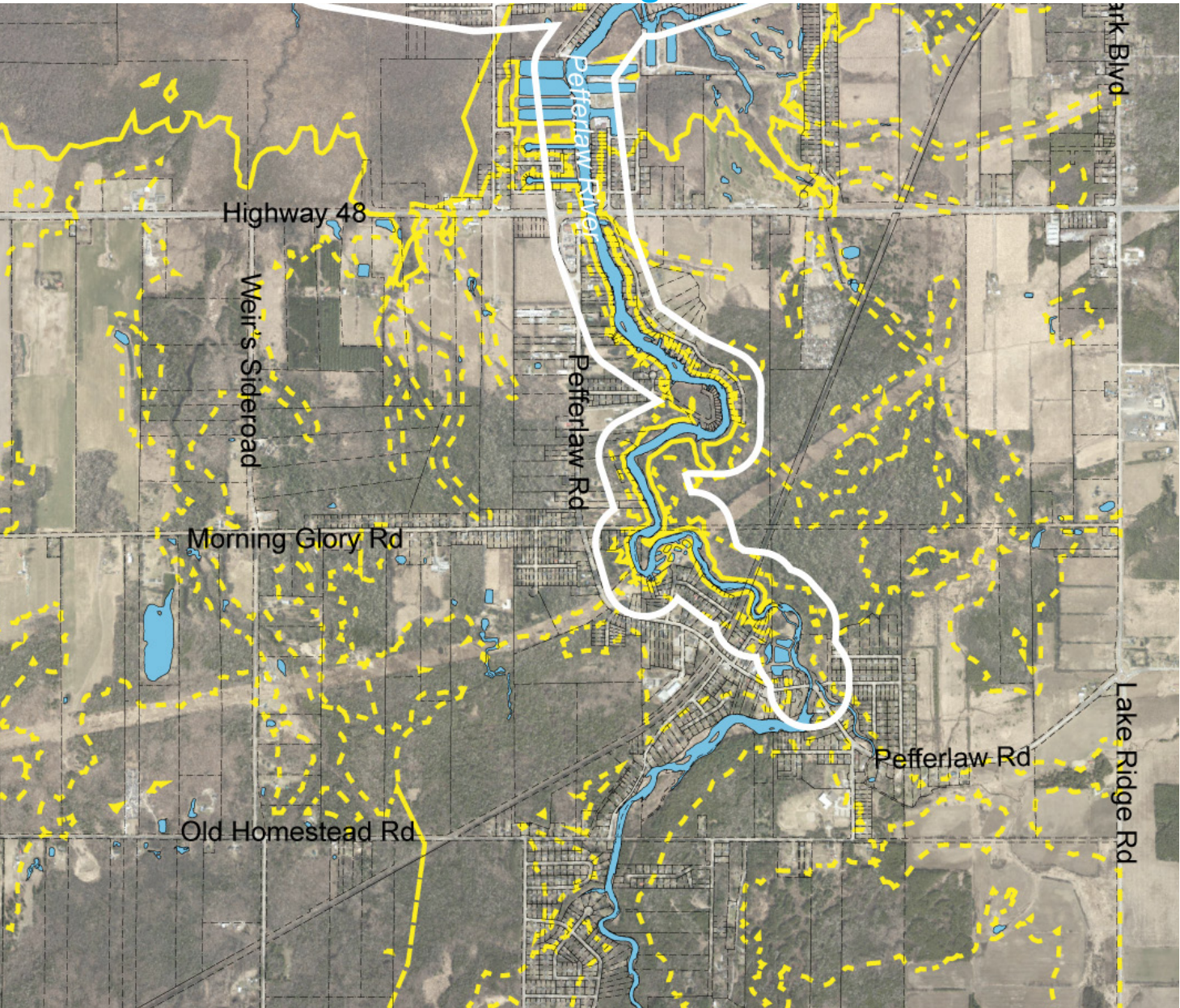


- Legend**
- Provincially Significant Wetland
  - Wetland
  - Woodland
  - Watercourse



# Park Rd to Thorah Park Blvd & Pepperlaw River

## LSRCA Lake Shoreline Hazard/Regulation Area - Pepperlaw River



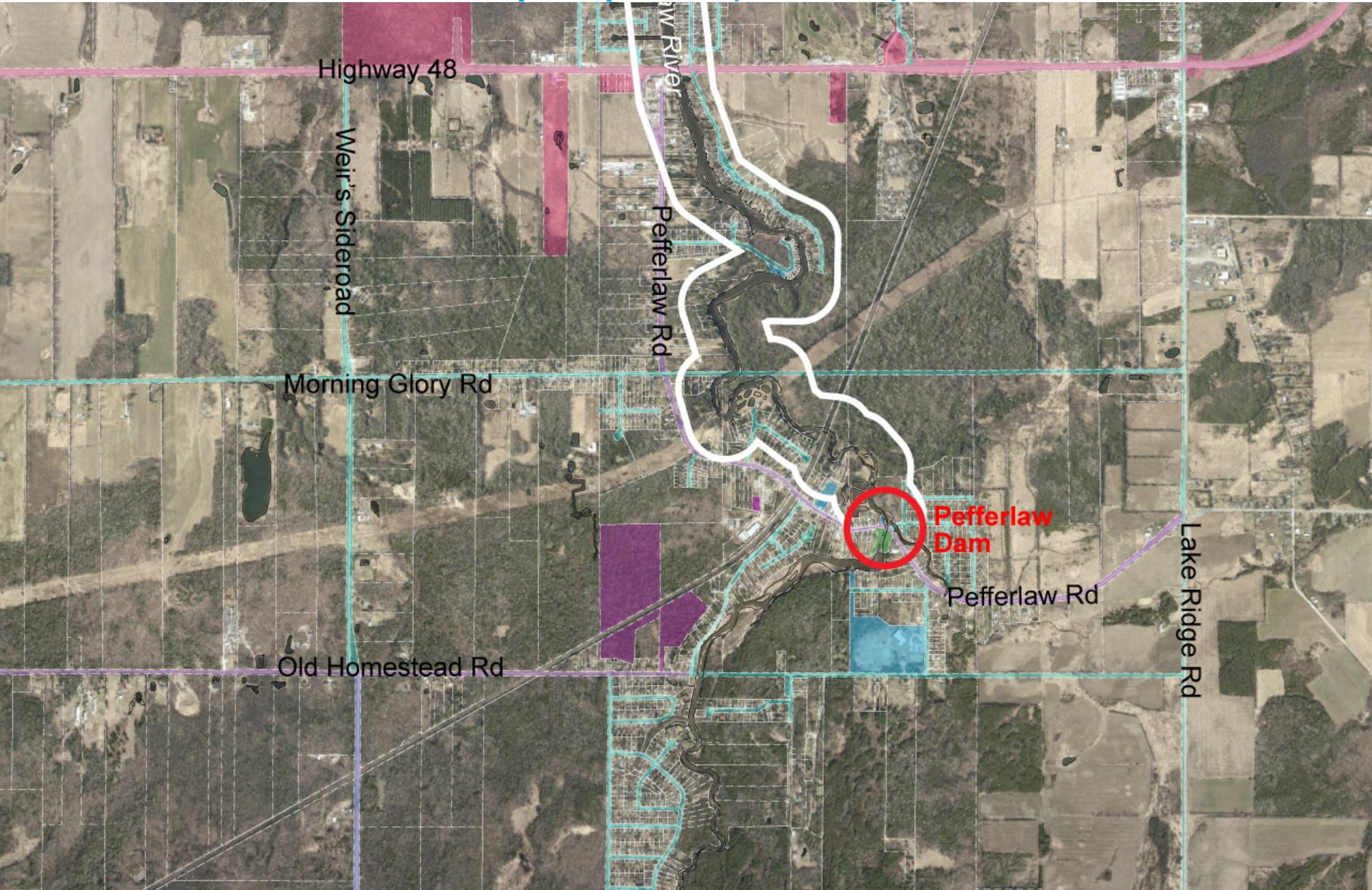
### Legend

- LSRCA Lake Shoreline Hazard/Regulation Area
- LSRCA Regulation Area



# Park Rd to Thorah Park Blvd & Pepperlaw River

## Road Ends, Parks and Township Properties (Pefferlaw)





# Park Rd to Thorah Park Blvd & Pefferlaw River

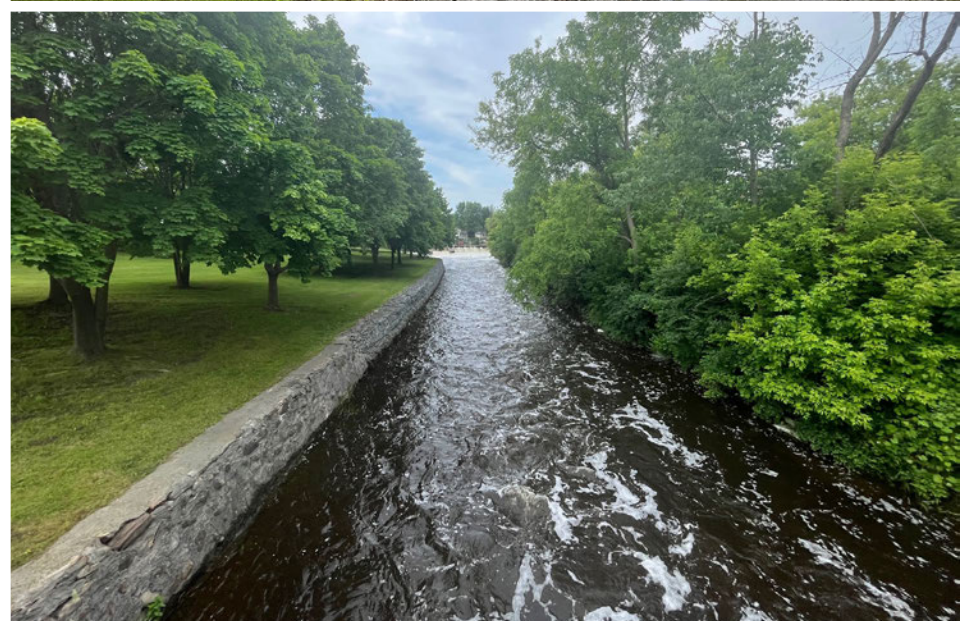
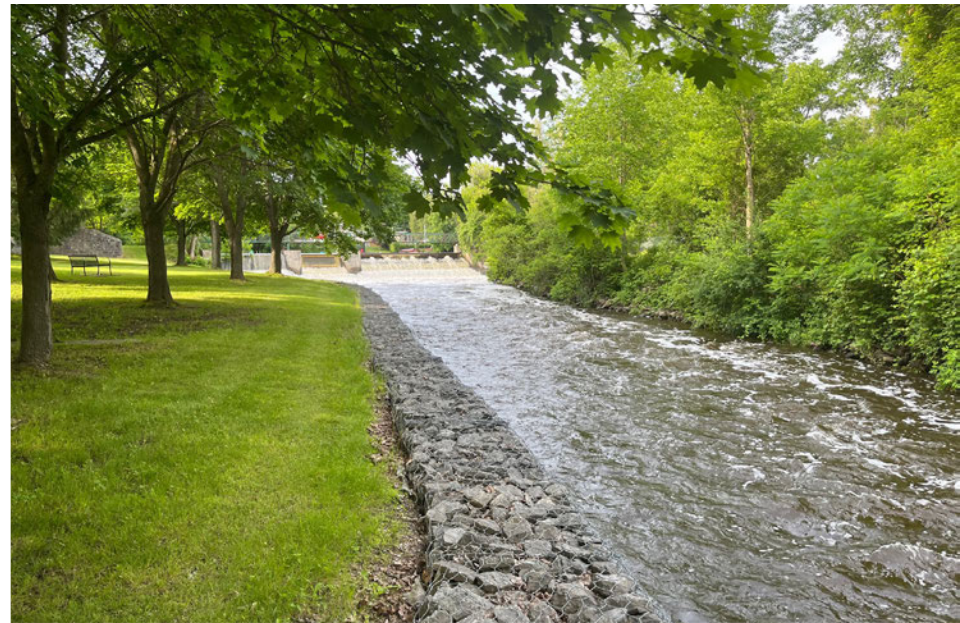
## Pefferlaw Dam Park





# Park Rd to Thorah Park Blvd & Pfefferlaw River

## Pfefferlaw Dam Park





# Park Rd to Thorah Park Blvd & Pefferlaw River

## Pefferlaw Dam Town Property





# Park Rd to Thorah Park Blvd & Pfefferlaw River

## What We've Heard So Far

- opportunity for public access to water with bridge (planning and approval underway) to Georgina Island
- ice fishing access from Virginia Beach
- Sibbald Point well used – best used boat launch in Georgina
- Pfefferlaw River is navigable
- Dam in Pfefferlaw - conversations regarding the condition of the dam (owned by the Conservation Authority), most of the land is owned by the Conservation Authority, nice park but needs lighting fencing
- residents want public waterfront land to be for residents only, don't want improvements made