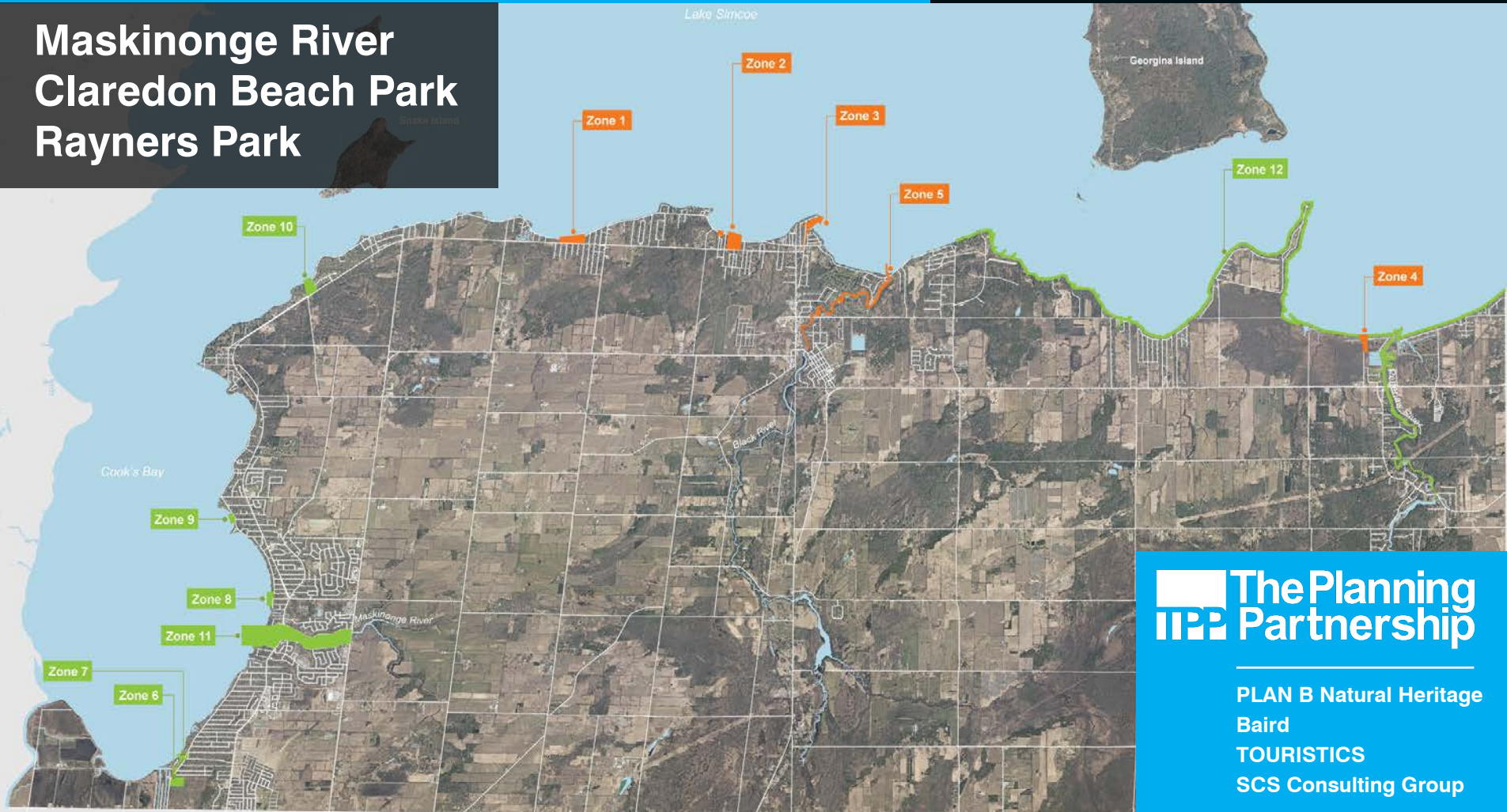


Waterfront Parks Master Plan

Part 2 (Zones 6-13)

Maskinonge River
Claredon Beach Park
Rayners Park



 The Planning
Partnership

PLAN B Natural Heritage
Baird
TOURISTICS
SCS Consulting Group

Areas of Focus

+ approx. 12 road ends from
Keswick to Roches Point

Rayners Park

Cook's Bay

Claredon Beach Park

Maskinonge River

KESWICK

Maskinonge River

Road Ends

Classification System for Publicly Owned Waterfront Road Ends



Category 1:

Appears to be open to all. Grass is cut, obvious signs of use, sometimes there's a way to get canoes/kayaks in the water. Morning Glory and Port are examples



Category 2:

Currently signed as “no public access”, "private", or for members of a residents group or Beach Association only, maintained by Town, Beach Association, residents groups or adjacent residents



Category 3:

A partnership with the Town and the cottage/community association (Roches Point seems to be the only example)

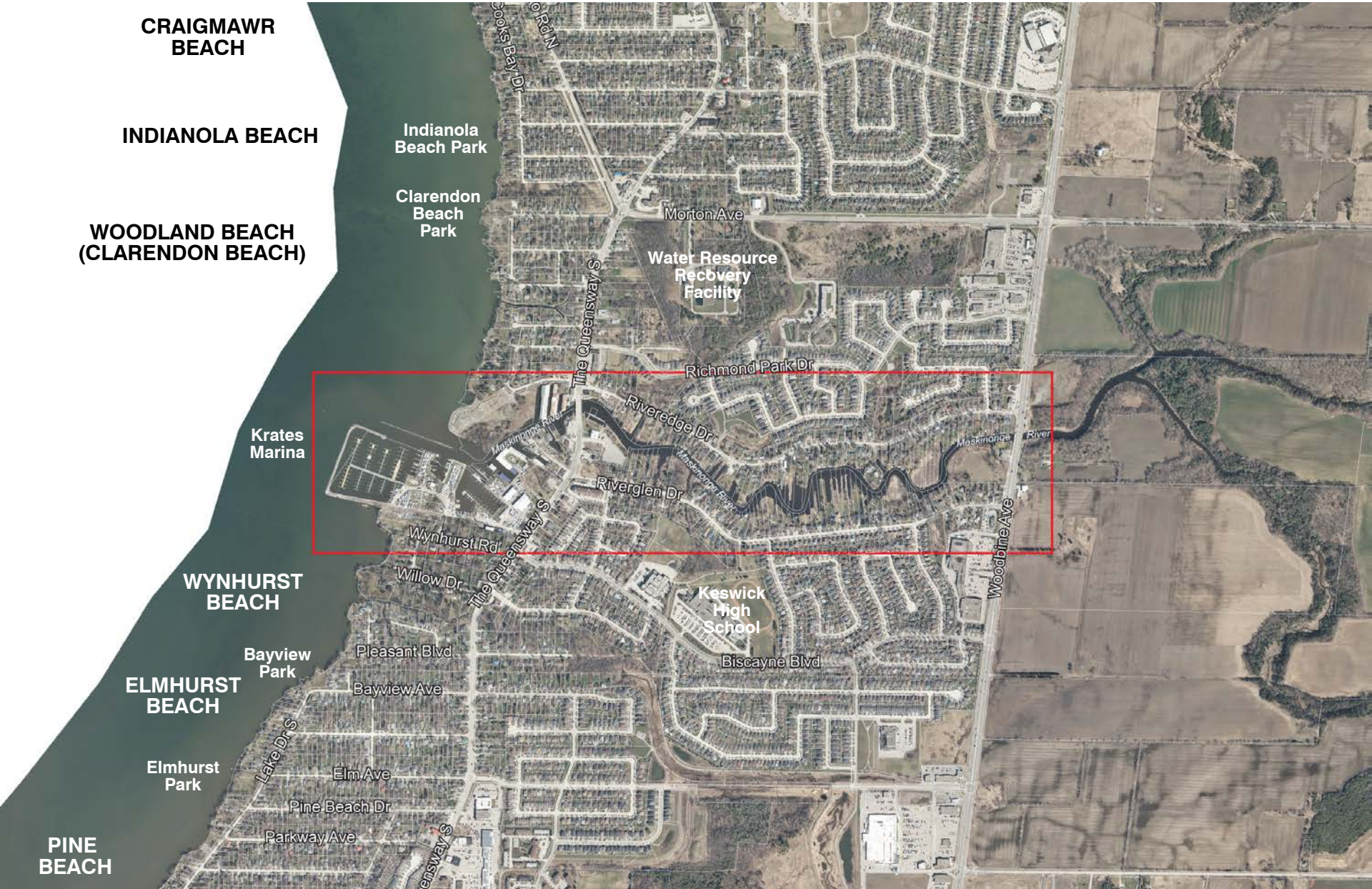


Category 4:

Currently, inaccessible by foot (ie no clearing for trail or ATV)

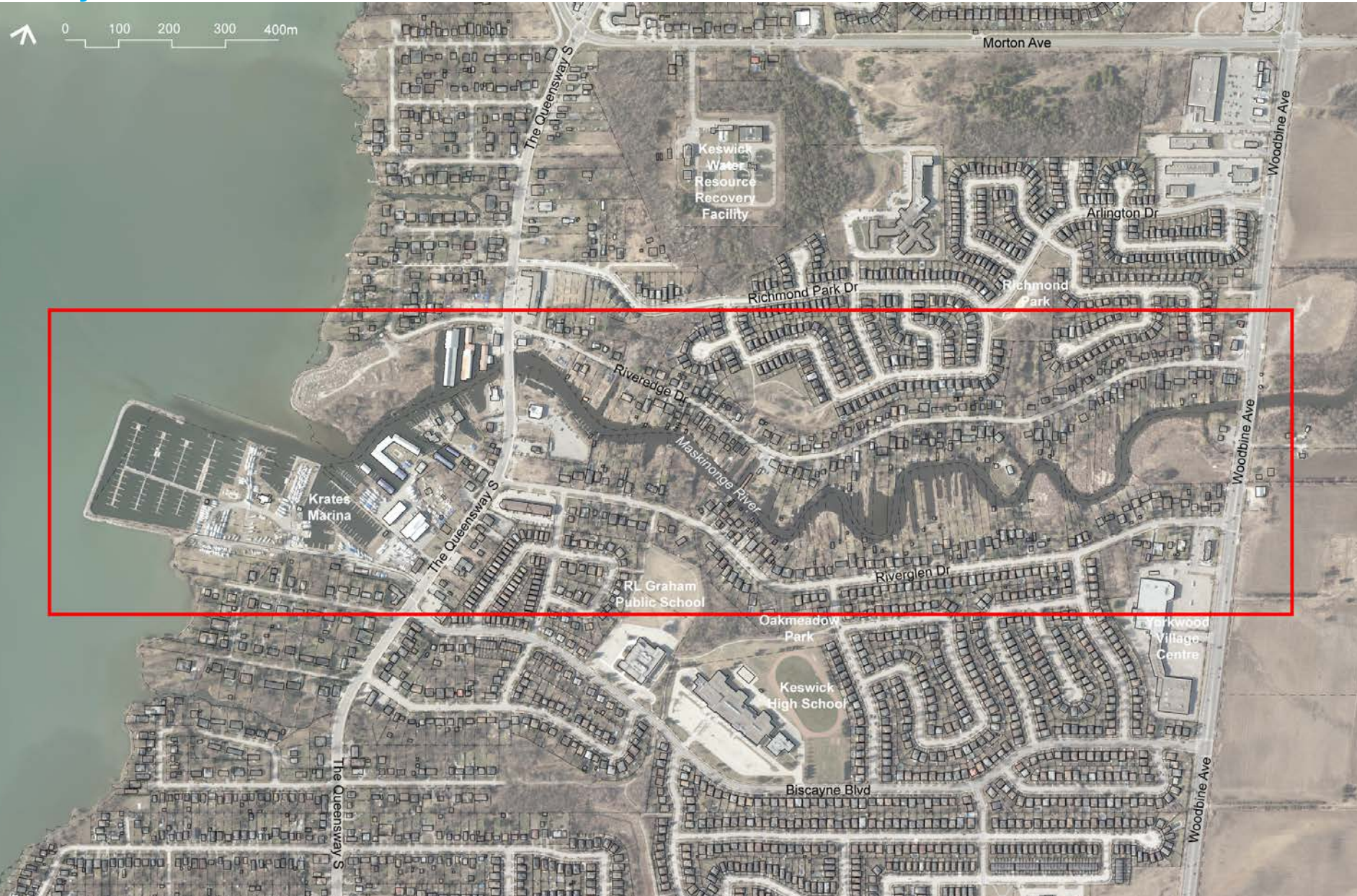
Maskinonge River

Context



Maskinonge River

Study Area



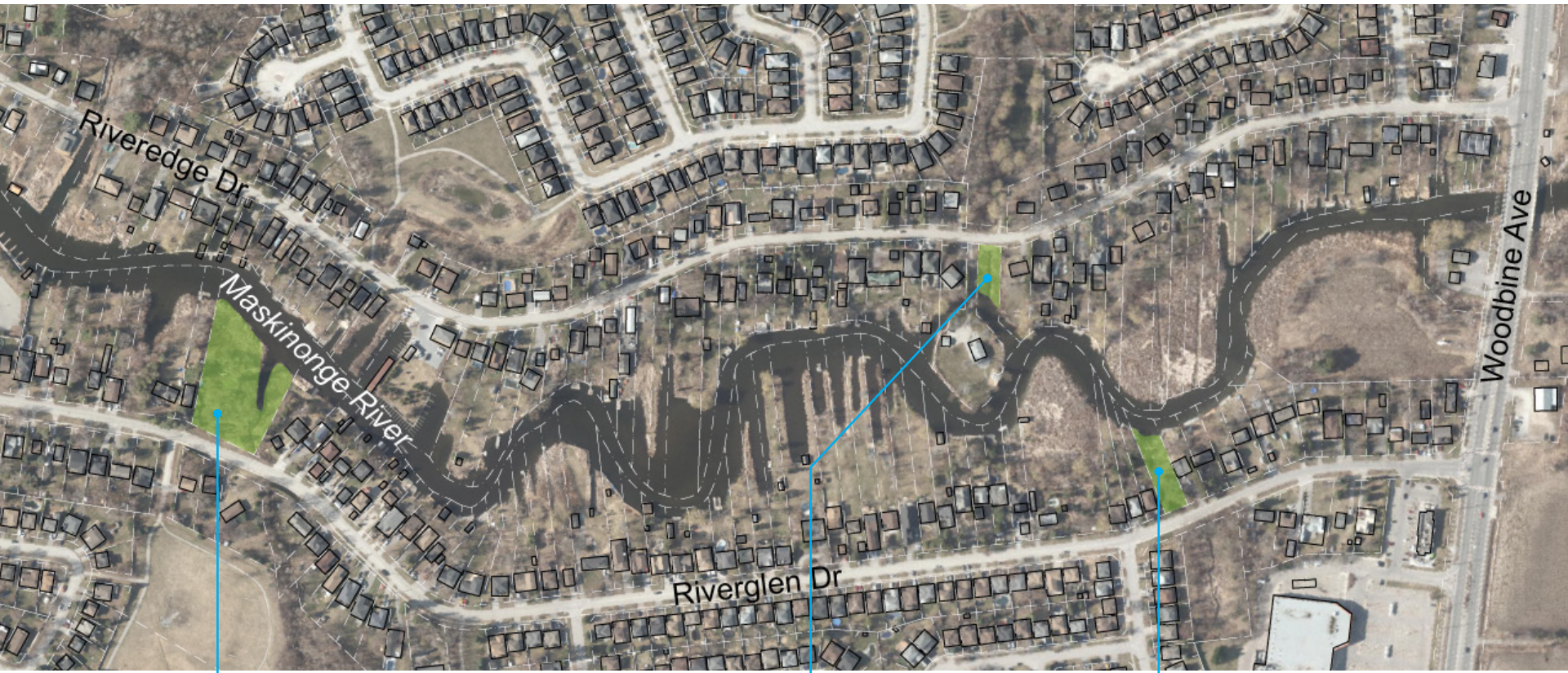
Maskinonge River

Land Ownership



Maskinonge River

Facilities & Amenities



Maskinonge River



Maskinonge River

Natural Heritage



Maskinonge River

Natural Heritage Overview

Existing Conditions

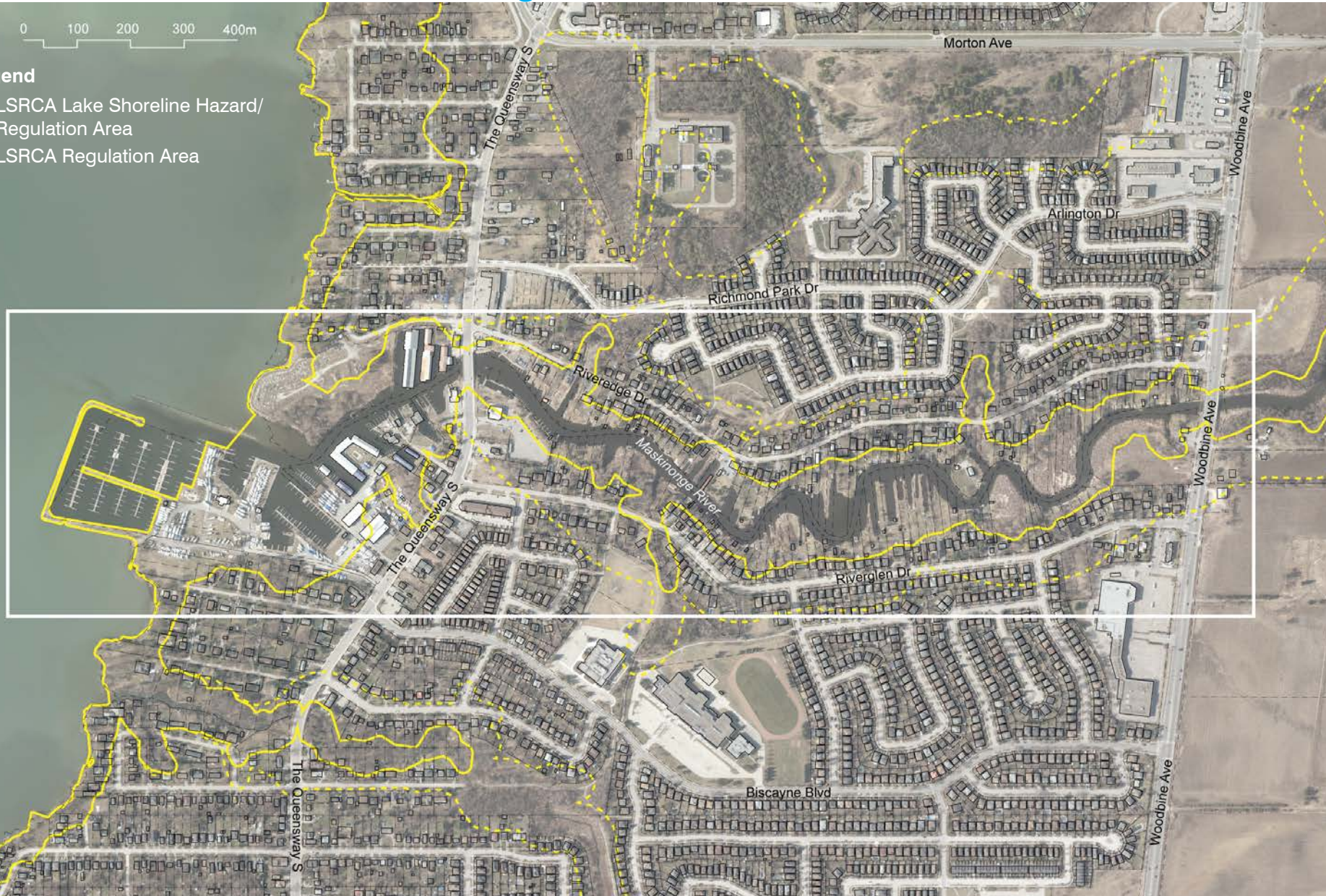
- Maskinonge River Provincially Significant Wetland Complex associated with riparian zone and flood prone areas. Mosaic of marsh (cattail, phragmites, reed canary grass), thicket swamp (red-osier dogwood/willow) and deciduous swamp (silver maple, green ash, poplar, willow).
- High level of habitat disturbance and degradation. Limited amount of riparian habitat.
- Water quality issues related to upstream agricultural land use and water-taking for crop irrigation. Excessive growth of algae and aquatic plants (e.g., duckweed) in the river channel.
- Remnant forest with watercourses located north of Riveredge Drive.

Maskinonge River

LSRCA Lake Shoreline Hazard/Regulation Area



- Legend**
- LSRCA Lake Shoreline Hazard/Regulation Area
 - LSRCA Regulation Area



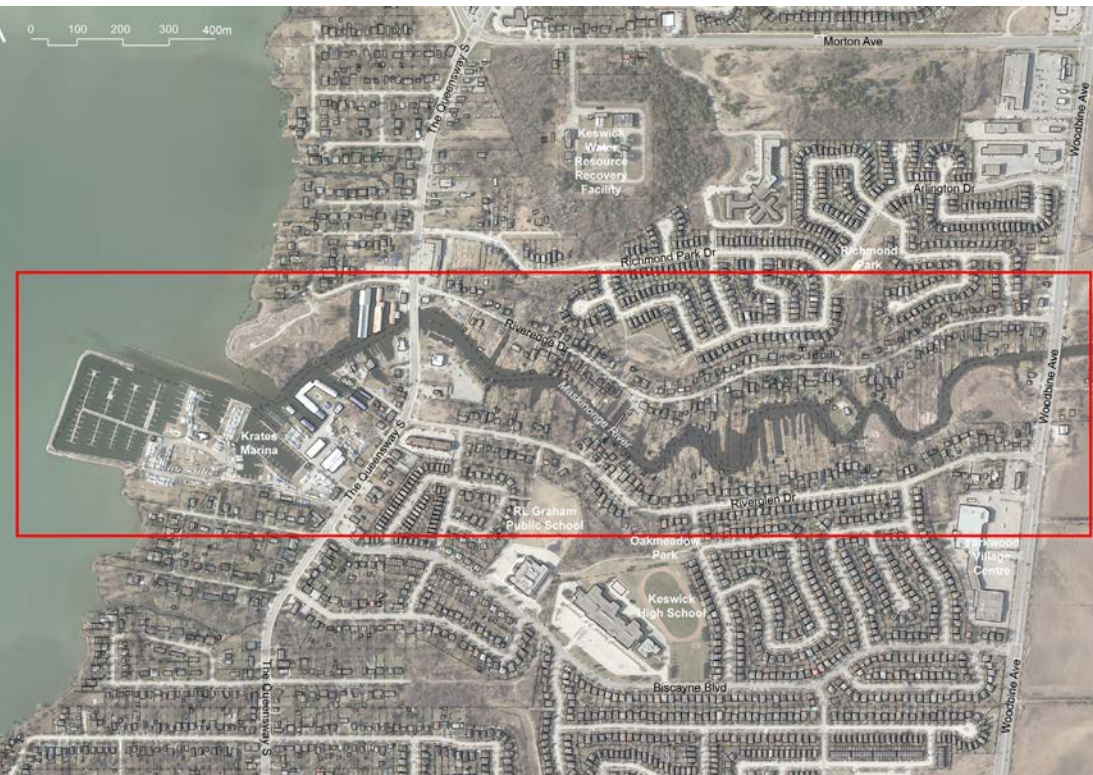
Maskinonge River

What We've Heard So Far

- boom being installed at Woodbine Avenue to limit flow of garbage downstream
- very limited flow in the river
- larger boats can't get under the bridge on Queensway
- possible development on the north side of river
- people along the river are passionate about this location
- the river is at the level of the lake even aerial photographs from the 50's show the river bottom being visible in some spots.
- the shore along the river was cut from 1954 to 1978 worsening the flow of the river and created stagnate spots. The river can sometimes flow in the opposite direction because of its elevation with the lake.
- interest in a new pedestrian bridge.
- mitigation like weeding etc. is temporary, and as long as the nutrient levels in the river/lake are high, they will simply grow back each year

Maskinonge River

Early thoughts



Access

- detailed field investigations required to identify opportunities for trail access to the river's edge, and for trails within features north of Riveredge Drive.
- development potential on the north side of the river (constrained by the PSW and setbacks from the Lake Simcoe shoreline and Maskinonge River.), opportunity for public access to the lake

Landscape & Grading

- protect existing naturally vegetated Town properties due to the overall lack of riparian habitat downstream from Woodbine Avenue
- protect remnant deciduous forest (and drainage) features north of Riveredge Drive and south of Richmond Park Drive.
- consultation with LSRCA recommended to ensure larger Maskinonge River Subwatershed Plan (LSRCA 2010) objectives are met regarding improving water quality, protecting remnant habitat and restoration/enhancement opportunities/priorities.

Claredon Beach Park

Context



Claredon Beach Park

Study Area



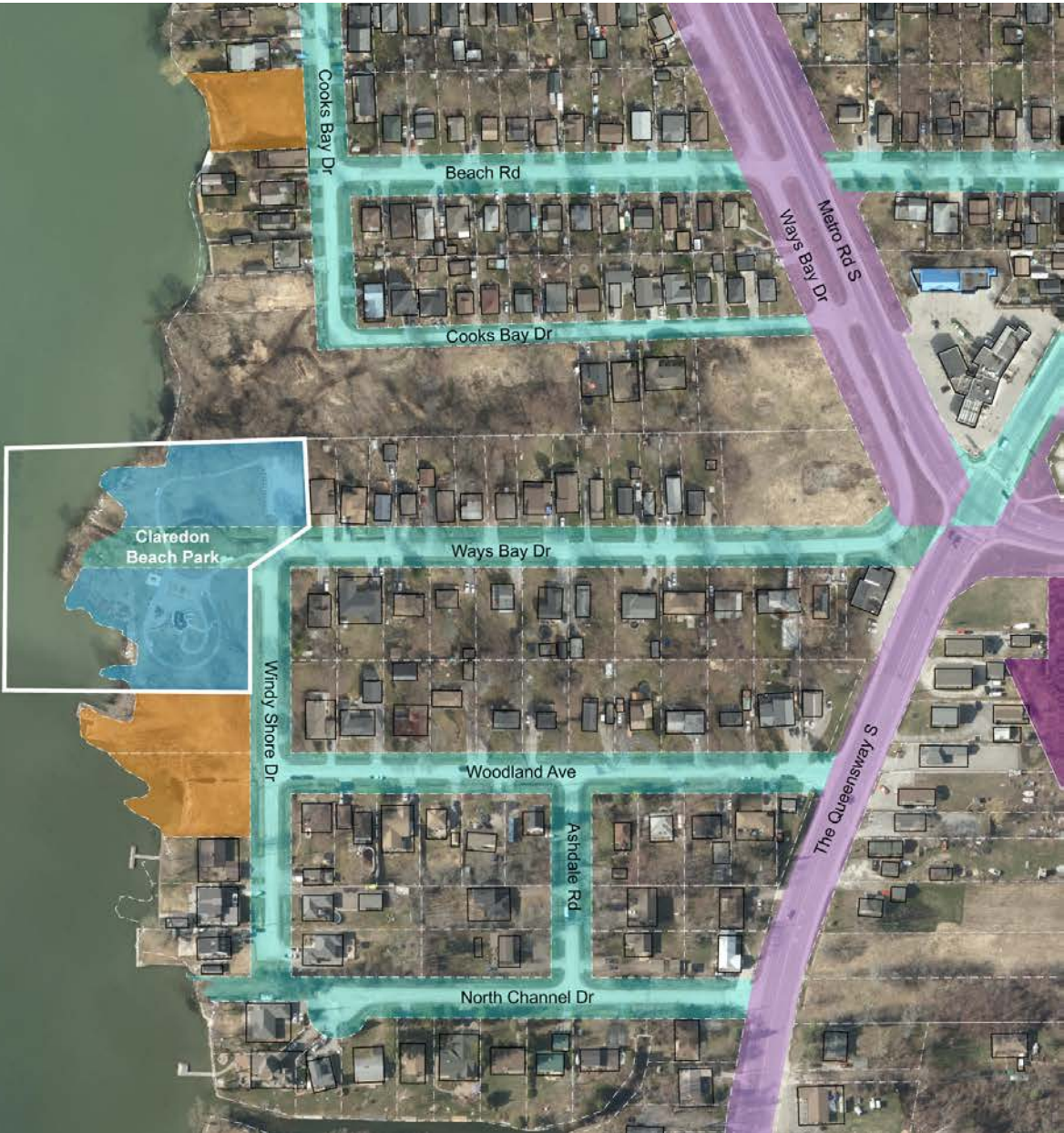
Claredon Beach Park

Land Ownership



Claredon Beach Park (land)
1 Ha (2.44 acres)

- Legend**
- Town of Georgina Property
 - Town of Georgina Rights-of-Way
 - Residents Association
 - York Region Property
 - York Region Rights-of-Way



Claredon Beach Park

Facilities & Amenities



Claredon Beach Park



Claredon Beach Park - Adjacent Property



Claredon Beach Park

Natural Heritage



Claredon Beach Park

Natural Heritage Overview

Existing Conditions

- Manicured grounds with willow, red/silver maple, Manitoba maple, eastern white cedar, brambles, red-osier dogwood, grey dogwood, reed canary grass, phragmites, cattail, and asters/goldenrods.
- Narrow fringe of shoreline vegetation.
- Small creek (road drainage) within the park supports baitfish.
- Shoreline protection – armour stone, beach stone.
- Windsurfing and para-sailing launch point.

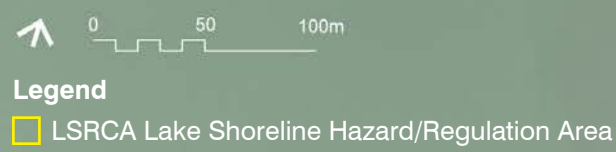
Coastal

Existing Conditions

- Park on open shore exposed to Lake Simcoe wave action.
- Shoreline protected with boulders, armourstone, there is evidence that stone has shifted, possibly due to ice.
- Cobble nearshore.
- Evidence of limited erosion along backshore of protected shorelines.
- Creek drains through park.
- Beach area at south end of park, sand covered in Phragmites debris.

Claredon Beach Park

LSRCA Lake Shoreline Hazard/Regulation Area



Claredon Beach Park

What We've Heard So Far

- well used for windsurfers and kite surfers
- popular for snowmobile and ATV access; causes damage to the landscape and shoreline
- recently improved by the Region of York
- variety of amenities including children's playground and washrooms
- adjacent to resident's association private beach and park, fence controls access

Claredon Beach Park

Early Thoughts



Access

- create designated locations for snowmobile/ATV access to the lake, in conjunction with shoreline improvements.
- pedestrian connection north to Cooks Bay Drive

Landscape & Grading

- incorporate bio-swale plantings within the creek (at the culvert) to polish/filter road runoff before it enters the lake.
- augment existing shoreline vegetation with locally indigenous plant species
- a 1-2m wide “no mow” zone along shoreline to increase habitat and promote stabilization
- monitor armourstone, field stone protection for damage
- clean Phragmites from beach

Recreation & Park Amenities

- consider installing an osprey platform
- accessible surface in play ground

Rayners Park

Context



Rayners Park

Study Area



Rayners Park

Land Ownership

Rayners Park (land)
0.27 Ha (0.67 acres)

Legend

- Town of Georgina Property
- Town of Georgina Rights-of-Way
- York Region Rights-of-Way

0 50 100m



Rayners Park

Facilities & Amenities

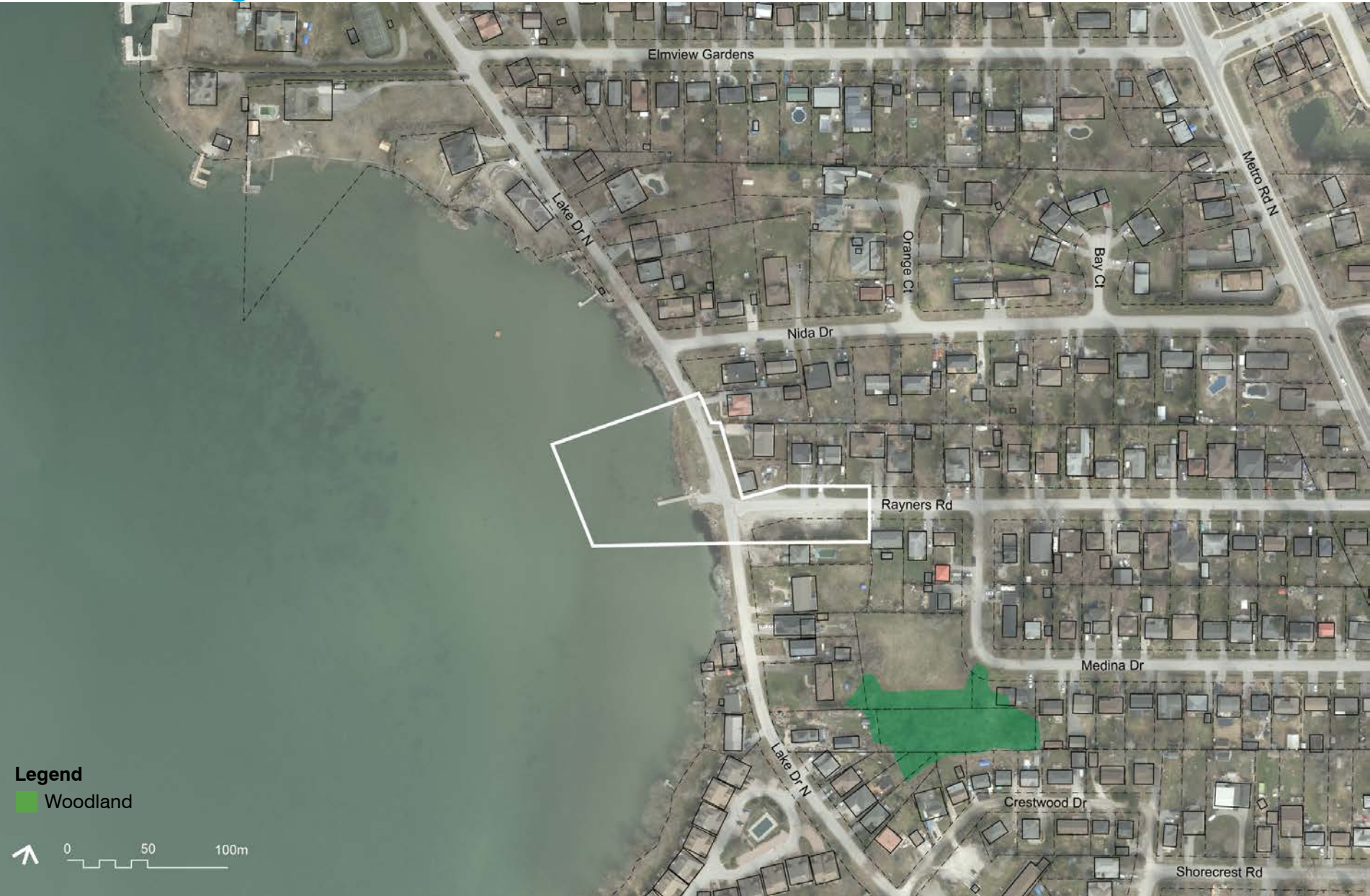


Rayners Park



Rayners Park

Natural Heritage



Rayners Park

Natural Heritage Overview

Existing Conditions

- Armoured shoreline (beach stone) with scattered willow, red-osier dogwood, and eastern white cedar.
- Small wharf with a narrow fringe of grass between shoreline and Lake Drive.
- LSRCA Shoreline Restoration project - interpretative signage display.

Coastal

Existing Conditions

- Shoreline on open lake exposed to Lake Simcoe wave action, ice.
- Shoreline north of boat launch protected with boulders, plantings.
- Pile supported dock, boards rotted in places, boulders in near shore prevent use of north side of dock.
- Boat launch, concrete slabs.
- Concrete damage, exposed rebar.

Rayners Park

LSRCA Lake Shoreline Hazard/Regulation Area



Rayners Park

What We've Heard So Far

- organize parking to accommodate more spaces
- often conflicts with swimming and boating
- launching boats can disrupt traffic along Lake Drive

Rayners Park

Early Thoughts



Access

- expand and define parking
- pedestrian walkway on Lake Drive

Landscape & Grading

- augment existing shoreline vegetation with locally indigenous plant species – selective plantings to compliment previous restoration project.
- consider bio-swale opportunity to polish/ filter road runoff from Lake Drive, Rayners Road, and the parking area.

Recreation & Park Amenities

- opportunity for complimentary use in opposite building on the corner