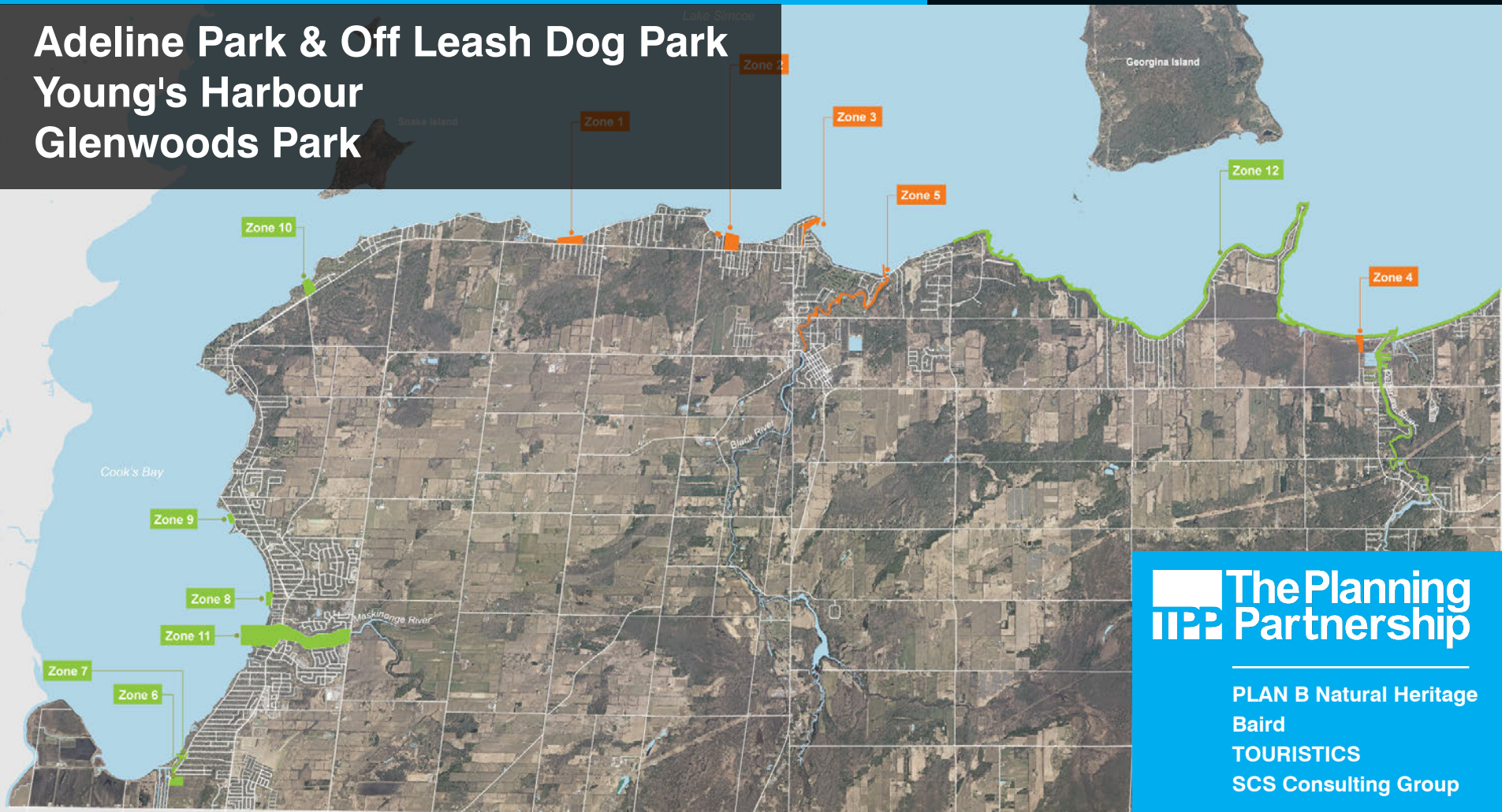


# Waterfront Parks Master Plan

## Part 2 (Zones 6-13)

Adeline Park & Off Leash Dog Park  
Young's Harbour  
Glenwoods Park





# Areas of Focus

+ approx. 12 road ends from  
Keswick to Roches Point

Cook's Bay

KESWICK

Maskinonge River

Glenwoods Park

Young's Harbour Park

Adeline Park &  
Leash Free Dog Park

# Road Ends

## Classification System for Publicly Owned Waterfront Road Ends



### Category 1:

Appears to be open to all. Grass is cut, obvious signs of use, sometimes there's a way to get canoes/kayaks in the water. Morning Glory and Port are examples



### Category 2:

Currently signed as "no public access", "private", or for members of a residents group or Beach Association only, maintained by Town, Beach Association, residents groups or adjacent residents



### Category 3:

A partnership with the Town and the cottage/community association (Roches Point seems to be the only example)



### Category 4:

Currently, inaccessible by foot (ie no clearing for trail or ATV)



# Adeline Park & Off Leash Dog Park

## Context





# Adeline Park & Off Leash Dog Park

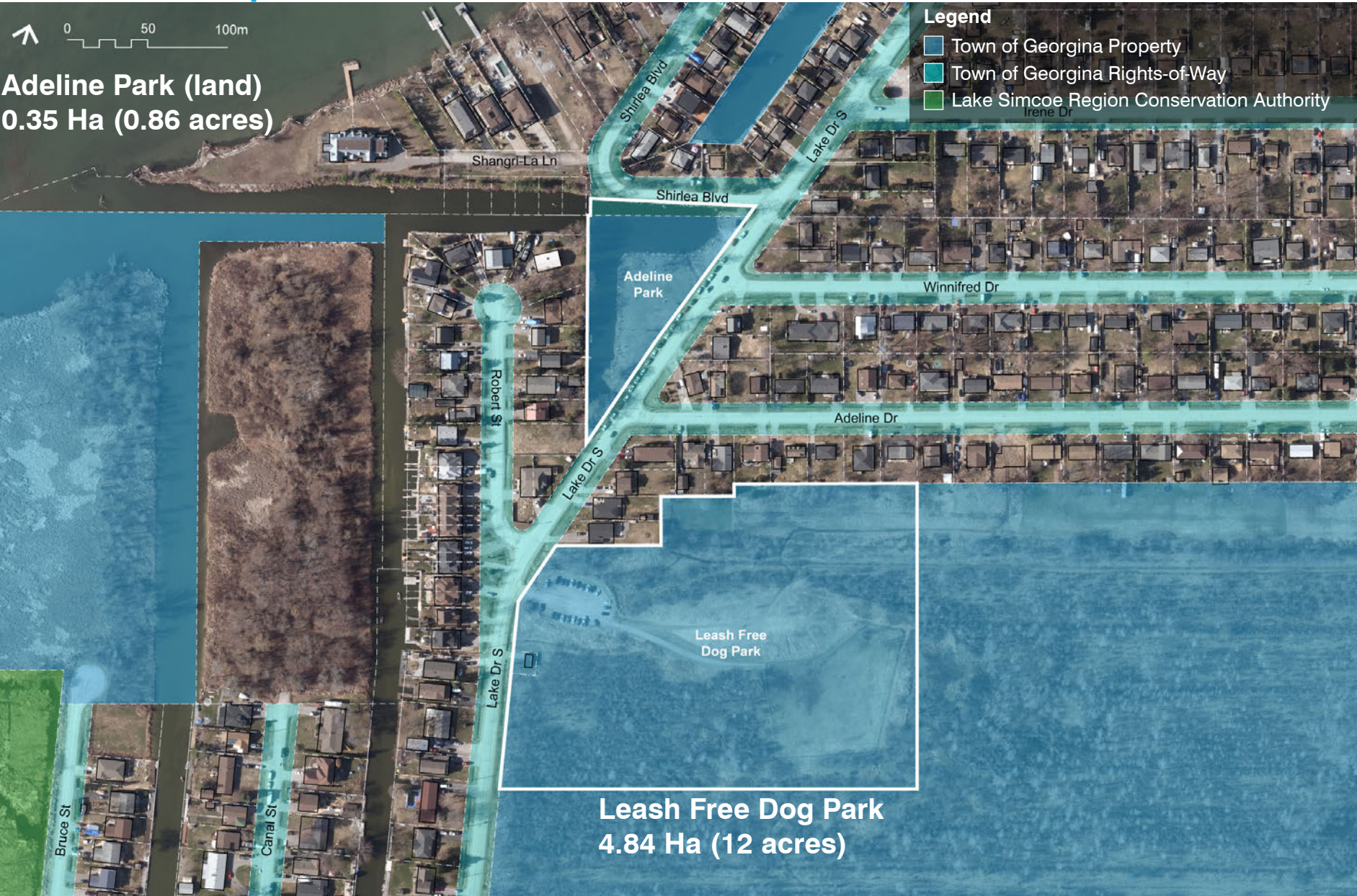
## Study Area





# Adeline Park & Off Leash Dog Park

## Land Ownership





# Adeline Park & Off Leash Dog Park

## Facilities & Amenities





# Adeline Park & Off Leash Dog Park





# Adeline Park & Off Leash Dog Park

## Natural Heritage





# Adeline Park

## Natural Heritage Overview

### Existing Conditions

- Narrow inlet with a shoreline fringe of cattail, red-osier dogwood, shrub willow, phragmites, reed canary grass and duckweed.
- Scattered shoreline trees – willow, cottonwood, poplar, and white pine.
- Manicured park grounds with planted red/silver maple trees.
- Shoreline littered with garbage
- Roadside drainage inputs to the lake.
- Holland Marsh Provincially Significant Wetland designation associated with the harbour and near shore areas.
- Potential habitat for aquatic fish species at risk (Black Redhorse-Threatened).<sup>1</sup>

<sup>1</sup>Species at risk found or potentially found is identified for the Lake Simcoe shoreline within the study area (Source: DFO 2022 – Aquatic Species at Risk Map).

## Coastal Overview

### Existing Conditions

- Canal with vegetated shoreline.
- Depths appear to be limited in the canal, a bathymetric survey would be required to confirm.
- Sheltered with very limited wave exposure.
- At 9:15 a.m. all fishing spots fully occupied with cars parked along road, overflow in dog parking lot.
- No significant shoreline erosion observed.



# Off Leash Dog Park

## Natural Heritage Overview

### Existing Conditions

- Flanked by the Holland Marsh Provincially Significant Wetland.
- Wetland comprised of a mosaic of shrub thicket swamp, deciduous swamp and marsh.
- Dominant plant species present include red-osier dogwood, shrub willow species, green/black ash, poplar species, cattail, phragmites and reed canary grass.
- Fenced off area is wet during the spring (high water table).
- Manicured trails located within the PSW show signs of damage from ATVs in low lying wet areas.
- Tree damage from dogs within the fenced off leash free area.



# Adeline Park & Off Leash Dog Park

## LSRCA Lake Shoreline Hazard/Regulation Area





# Adeline Park & Off Leash Dog Park

## What We've Heard So Far

### Adeline Park

- boat launch is popular for canoe, kayak, paddleboards, small boats
- historically, dredging done through local Community Improvement Plan
- heavy seasonal use with fishing bringing the highest demand for this park in the spring/early summer. Weekends can be shoulder-to-shoulder along the water.
- residents backing onto the park from Robert Street are impacted when people get their line snagged on private property, trespassing etc.
- requests for fishing to be banned.

### Off Leash Dog Park

- more attention to appearance; people park here and go to Adeline
- very wet, expensive to drain
- possibly create an area for smaller dogs
- park was installed in a wetland causing significant seasonal flooding/wet areas during the spring thaw and late fall.
- parking lot is well used for both this park and overflow from Adeline.



# Adeline Park & Off Leash Dog Park

## Early Thoughts



### Access

- possibly expand parking at Leash Free Dog Park
- signage and wayfinding
- sidewalk on Lake Drive
- install culverts or raise sections of trails within the wetland that are subject to flooding
- define on street parking at Adeline
- define fishing platforms

### Landscape & Grading

- landscape/grading enhancement
- provide protection around the base of damaged trees within the dog park
- drainage improvements (tile drain) to address flooding within the dog park and LRSCA

### Recreation & Park Amenities

- depths are limited and may be suitable for canoes and kayaks
- add washrooms



# Young's Harbour Park

## Context





# Young's Harbour Park

## Study Area





# Young's Harbour Park

## Land Ownership



Young's Harbour Park (land)  
0.47 Ha (1.15 acres)

Triangular Parking Parcel  
0.33 Ha (0.82 acres)





# Young's Harbour Park

## Facilities & Amenities





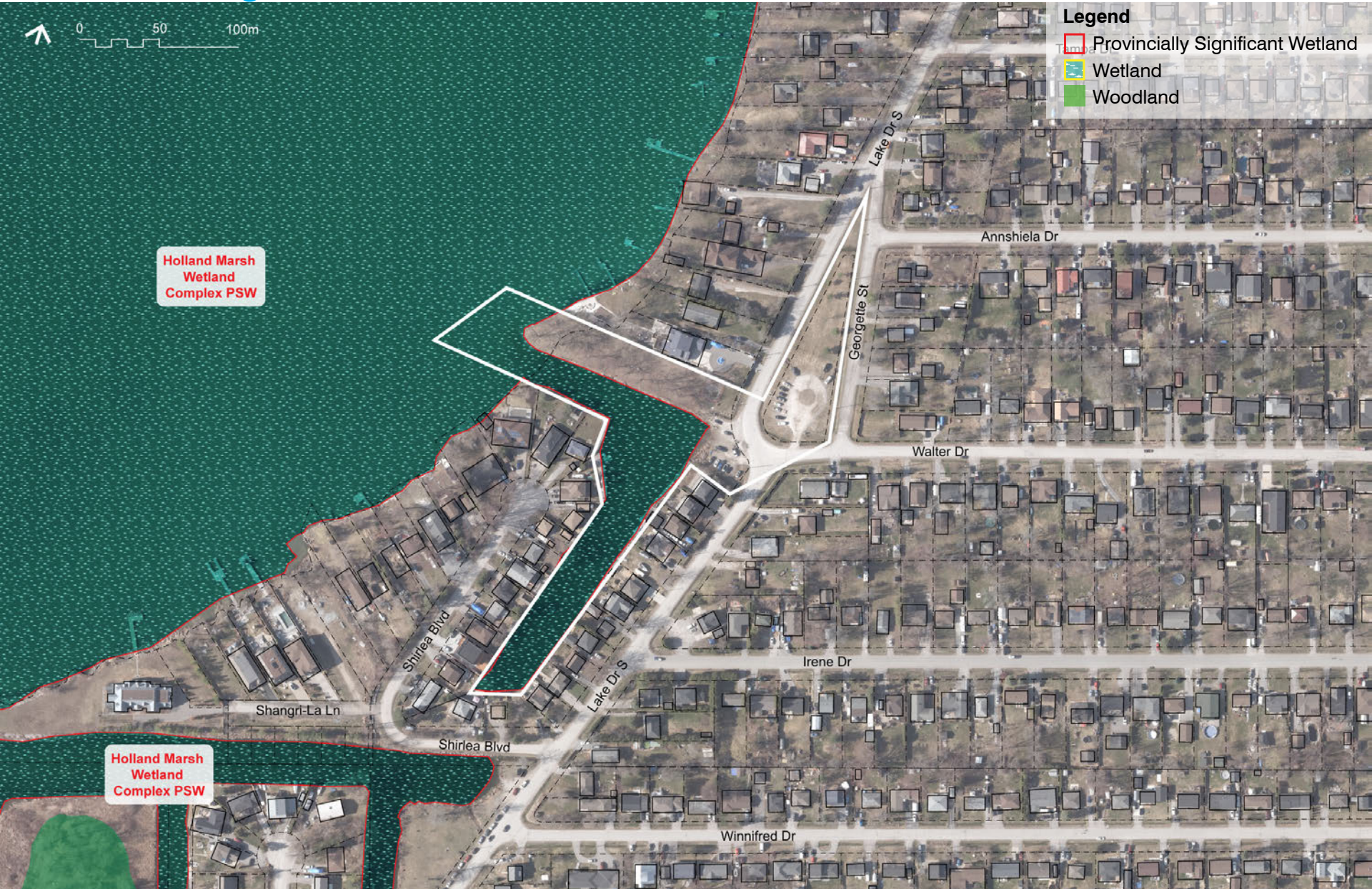
# Young's Harbour Park





# Young's Harbour Park

## Natural Heritage





# Young's Harbour Park

## Natural Heritage Overview

### Existing Conditions

- Narrow fringe of cattail along shoreline with scattered eastern white cedar, willow, and Manitoba maple.
- Mature silver maple trees and manicured grass associated with picnic area.
- Manicured grass with planted Austrian pine in parking area.
- Cattail lined drainage swale along south side of public boat launch.
- Holland Marsh Provincially Significant Wetland designation associated with harbour and near shore areas.
- Potential habitat for aquatic fish species at risk.

## Coastal Overview

### Existing Conditions

- Canal with shoreline sheltered from wave action.
- Private development with docks along south arm, main channel is open without docks.
- Phragmites debris at boat launch.
- Culvert flowing into the canal near the boat launch; section of steel sheet pile adjacent to the culvert.
- The shoreline in the approach channel has some erosion, trees observed with roots exposed due to erosion.
- Erosion may be in part due to boat wake.
- The park is a stewardship demonstration site, riverstone and bioengineering were used, along with plantings to stabilize the shoreline. Timber piles are also visible.



# Young's Harbour Park

## LSRCA Lake Shoreline Hazard/Regulation Area





# Young's Harbour Park

## What We've Heard So Far

- ramp is popular and sometimes there are conflicts with users
- parking across the street, can get very busy
- Town installed a new playground
- beautiful walk out to the lake
- park can get very wet, opportunities for enhancement
- lake bed is rising with weeds
- residents have cleared snow for skating rink
- fishing not allowed



# Young's Harbour Park

## Early Thoughts



### Access

- expand parking
- signage and wayfinding
- sidewalk on Lake Drive
- reorganize boat launch
- walkway and seating area

### Landscape & Grading

- enhanced seating and landscape in park
- shoreline plantings in a 1-2m wide “no mow” zone along the waters edge (i.e., within the picnic area)
- regulate boat speed to protect shoreline and aquatic wetland vegetation
- future dredging of the harbour will require a permit from LSRCA and must consider aquatic species at risk protected under the *Endangered Species Act*
- clean the launch area, remove dead Phragmites

### Recreation & Park Amenities

- dock to tie up



# Glenwoods Park

## Context





# Glenwoods Park

## Study Area





# Glenwoods Park

## Land Ownership

**Legend**

- Town of Georgina Property
- Town of Georgina Rights-of-Way

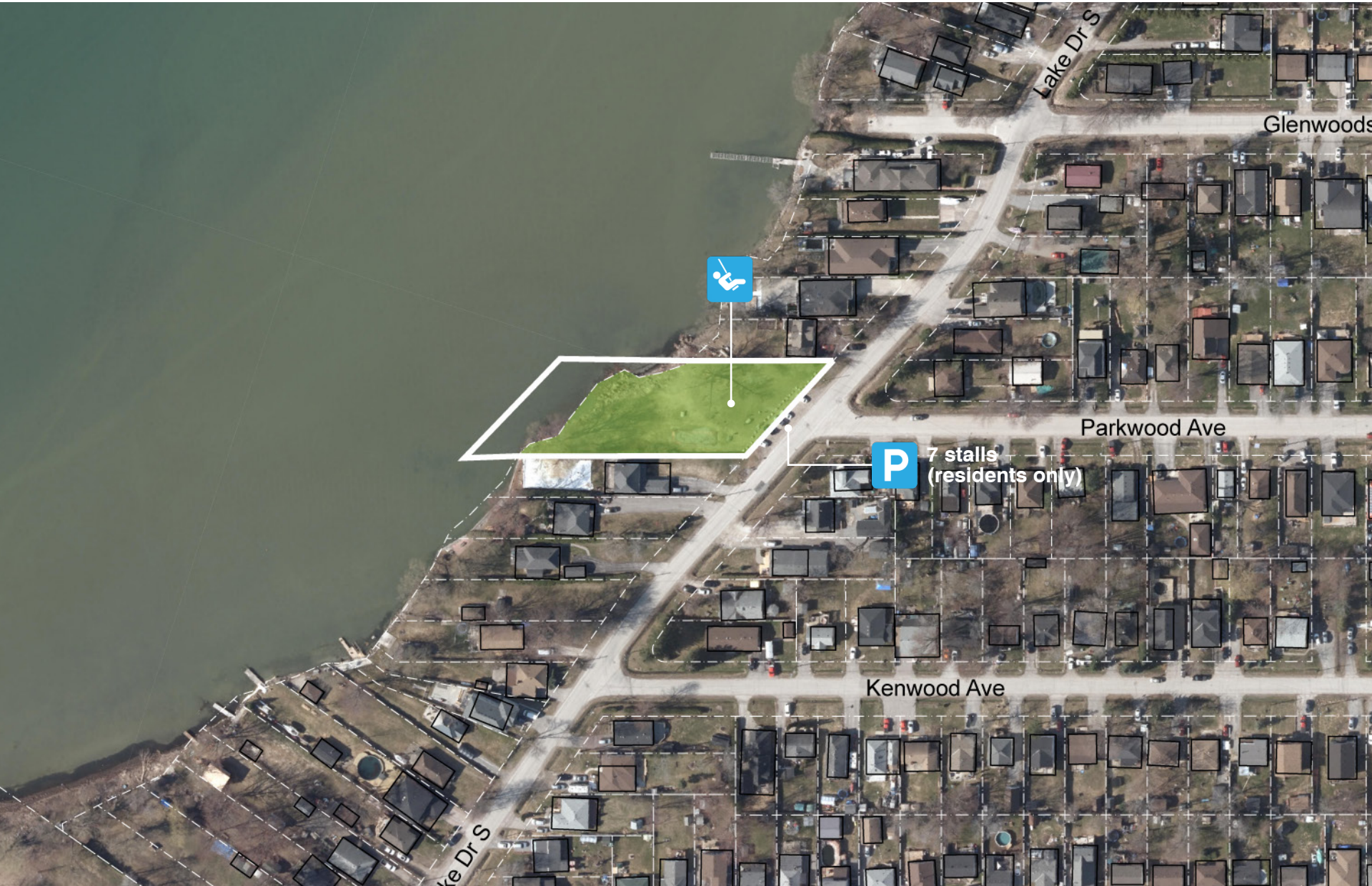
**Glenwoods Park (land)**  
**0.27 Ha (0.66 acres)**





# Glenwoods Park

## Facilities & Amenities





# Glenwoods Park





# Glenwoods Park

## LSRCA Lake Shoreline Hazard/Regulation Area

Legend  
■ LSRCA Lake Shoreline Hazard/Regulation Area





# Glenwoods Park

## Early Thoughts



### Access

- new accessible path installed 2021
- define on street parking
- provide sidewalk to Glenwoods Avenue road end

### Landscape & Grading

- additional tree planting

### Recreation & Park Amenities

- new playground installed 2021